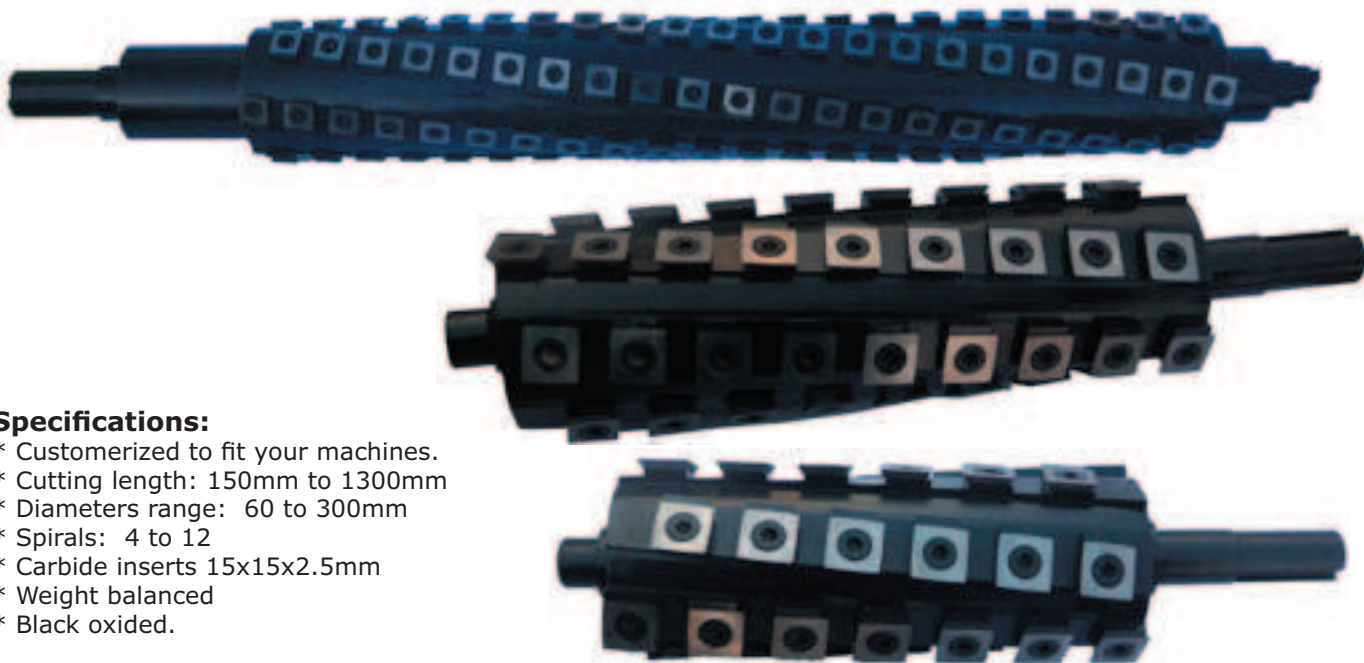


HELICAL SPIRAL CUTTERHEAD

These true helical spiral cutterheads produce smooth surfaces on the toughest of woods. The unbelievable shear cutting not only greatly reduces the tearout of wood, but also is extremely quiet. The cutterheads produce smaller chips and dust collection is much easier. Replace only the inserts when all four edges are damaged or dull. The carbide inserts are installed onto the cutterheads. Customers' sizes and design are available.



Specifications:

- * Customized to fit your machines.
- * Cutting length: 150mm to 1300mm
- * Diameters range: 60 to 300mm
- * Spirals: 4 to 12
- * Carbide inserts 15x15x2.5mm
- * Weight balanced
- * Black oxidized.

SPIRAL CUTTERHEAD

Features:

- * The cutter heads for for use on wood moulders, shappers or millers.
- * Customers' sizes such as diameters, taper or straight bores, height are available.
- * Shear action cutting
- * Dynamically balanced for smooth running at high speed.
- * Heavy duty cutting and lower horsepower consumption.
- * Minimum noise level, extremely quite.
- * Choice of steel or aluminum alloy cutterhead body.
- * Bore diameter: 30mm to 50mm.
- * Body diameter: 60mm to 125mm.
- * Height: 40mm to 310mm.
- * Sprial: 4 to 12
- * Carbide inserts: 15x15x2.5mm radius

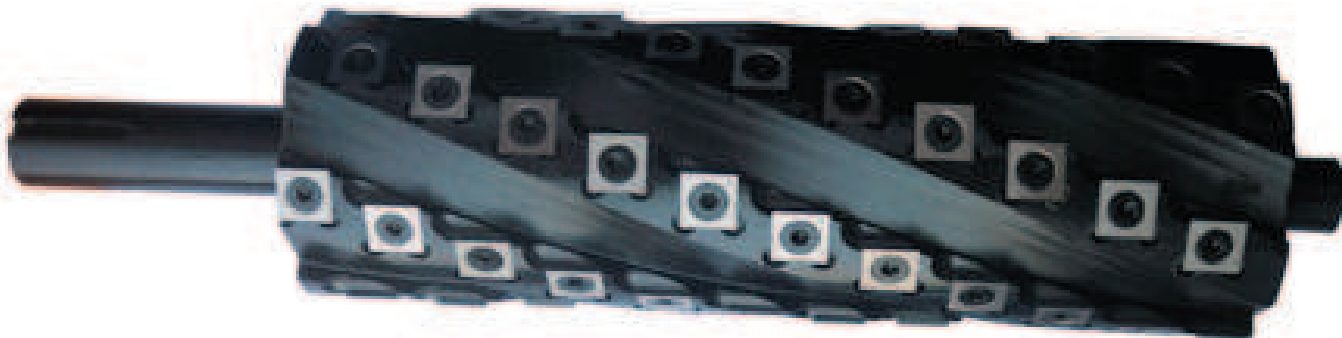


SPIRAL CUTTERHEAD

The cutter heads are made of high grade alloy steel, weight balanced. Carbide inserts with 4 straight edges. Suitable for Single side planer, Double surfaces planer
Customers' sizes such as diameters, taper or straight bores, height are available.

Specifications:

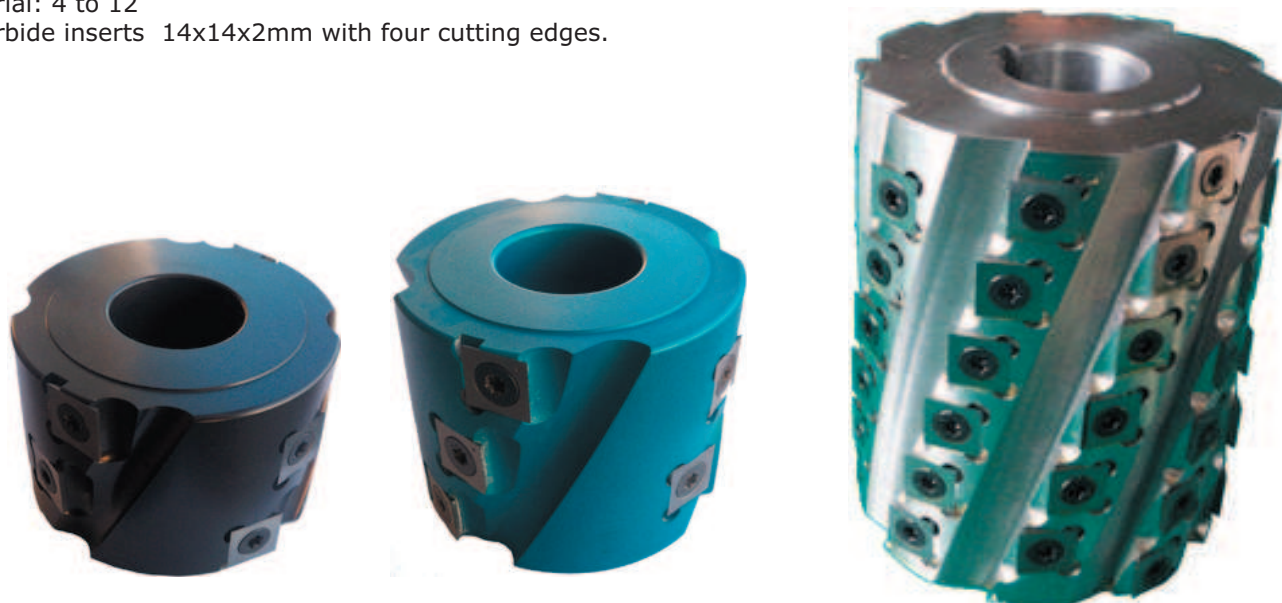
- * Customized to fit your machines.
- * Cutting length: 150mm to 1300mm
- * Diameters range: 60 to 300mm
- * Spirals: 4 to 12
- * Carbide inserts 14x14x2mm.
- * Weight balanced
- * Black oxidized.



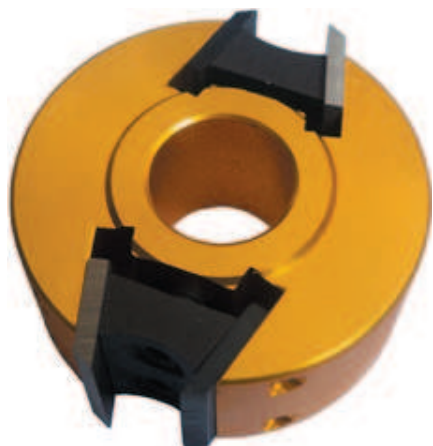
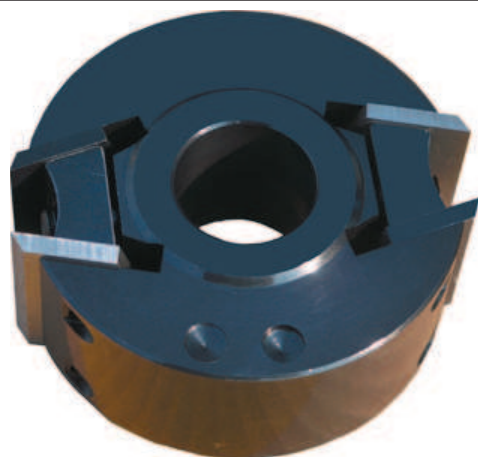
SPIRAL CUTTERHEAD

Features:

- * The cutter heads for use on wood moulders, shappers or millers.
- * Customers' sizes such as diameters, taper or straight bores, height are available.
- * Reduce tearout and leave smooth finish.
- * Less down time.
- * Dynamically balanced for smooth running at high speed.
- * Heavy duty cutting and lower horsepower consumption.
- * Minimum noise level, extremely quite.
- * Choice of steel or aluminum alloy cutterhead body.
- * Bore diameter: 30mm to 50mm.
- * Body diameter: 60mm to 125mm.
- * Height: 40mm to 310mm.
- * Spiral: 4 to 12
- * Carbide inserts 14x14x2mm with four cutting edges.



Universal Profile Cutter Head



Planning Head



Diameter	Bore Dia.	Height	Z	Max. Speed (RPM)	
93	30	40	2	7000-9000	MAN (With limiter)
93	30	50	2	7000-9000	
120	30	40	2	7000-9000	
120	30	50	2	7000-9000	
93	30	40	2	7000-9000	MEC (without limiter)
93	30	50	2	7000-9000	
120	30	40	2	7000-9000	
120	30	50	2	7000-9000	

Customer's sizes are available.

* Kits for Cutter Head, Profile Cutters and Limitors with for 6, 12, 24 and 36, 37 sets.

* knife profile option by the customer's request

D	d	B	Z	Max. RPM
90	30	100	2 or 4	9000
90	30	120	2 or 4	9000
90	30	150	2 or 4	9000
90	30	180	2 or 4	9000
105	30	100	2 or 4	9000
105	30	130	2 or 4	9000
105	30	150	2 or 4	9000
105	30	180	2 or 4	9000
105	30	210	2 or 4	9000
125	40	40	2 or 4	9000
125	40	60	2 or 4	9000
125	40	80	2 or 4	9000
125	40	100	2 or 4	9000
125	40	130	2 or 4	9000
125	40	150	2 or 4	9000
125	40	180	2 or 4	9000
125	40	230	2 or 4	9000
125	40	240	2 or 4	9000
140	50	60	4 or 6	8000
140	50	80	4 or 6	8000
140	50	100	4 or 6	8000
140	50	130	4 or 6	8000
140	50	180	4 or 6	8000
140	50	230	4 or 6	8000
160	50	60	6 or 8	8000
160	50	80	6 or 8	8000
160	50	100	6 or 8	8000
160	50	130	6 or 8	8000
160	50	180	6 or 8	8000
160	50	230	6 or 8	8000



Order No. 803-2000
40mm width 4mm thickness



Order No. 803-2001
40mm width 4mm thickness



Order No. 803-2002
40mm width 4mm thickness



Order No. 803-2003
40mm width 4mm thickness



Order No. 803-2004
40mm width 4mm thickness



Order No. 803-2005
40mm width 4mm thickness



Order No. 803-2006
40mm width 4mm thickness



Order No. 803-2007
40mm width 4mm thickness



Order No. 803-2008
40mm width 4mm thickness



Order No. 803-2009
40mm width 4mm thickness



Order No. 803-2010
40mm width 4mm thickness



Order No. 803-2011
40mm width 4mm thickness



Order No. 803-2012
40mm width 4mm thickness



Order No. 803-2013
40mm width 4mm thickness



Order No. 803-2014
40mm width 4mm thickness



Order No. 803-2015
40mm width 4mm thickness



Order No. 803-2016
40mm width 4mm thickness



Order No. 803-2017
40mm width 4mm thickness



Order No. 803-2018
40mm width 4mm thickness



Order No. 803-2019
40mm width 4mm thickness



Order No. 803-2020
40mm width 4mm thickness



Order No. 803-2021
40mm width 4mm thickness



Order No. 803-2022
40mm width 4mm thickness



Order No. 803-2023
40mm width 4mm thickness



Order No. 803-2024
40mm width 4mm thickness



Order No. 803-2025
40mm width 4mm thickness



Order No. 803-2026
40mm width 4mm thickness



Order No. 803-2027
40mm width 4mm thickness



Order No. 803-2028
40mm width 4mm thickness



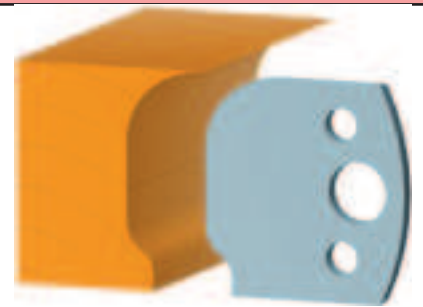
Order No. 803-2029
40mm width 4mm thickness



Order No. 803-2045
40mm width 4mm thickness



Order No. 803-2046
40mm width 4mm thickness



Order No. 803-2047
40mm width 4mm thickness



Order No. 803-2048
40mm width 4mm thickness



Order No. 803-2049
40mm width 4mm thickness



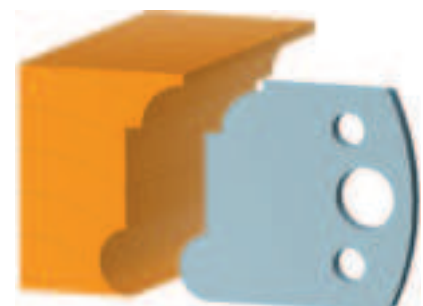
Order No. 803-2050
40mm width 4mm thickness



Order No. 803-2051
40mm width 4mm thickness



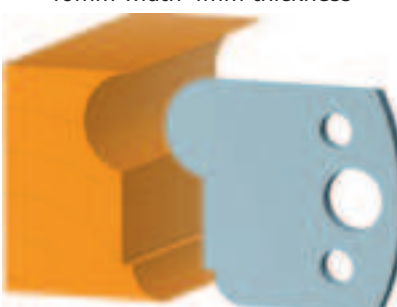
Order No. 803-2052
40mm width 4mm thickness



Order No. 803-2053
40mm width 4mm thickness



Order No. 803-2054
40mm width 4mm thickness



Order No. 803-2055
40mm width 4mm thickness



Order No. 803-2056
40mm width 4mm thickness



Order No. 803-2057
40mm width 4mm thickness



Order No. 803-2058
40mm width 4mm thickness



Order No. 803-2059
40mm width 4mm thickness



Order No. 803-2060
40mm width 4mm thickness



Order No. 803-2061
40mm width 4mm thickness



Order No. 803-2062
40mm width 4mm thickness



Order No. 803-2063
40mm width 4mm thickness



Order No. 803-2064
40mm width 4mm thickness



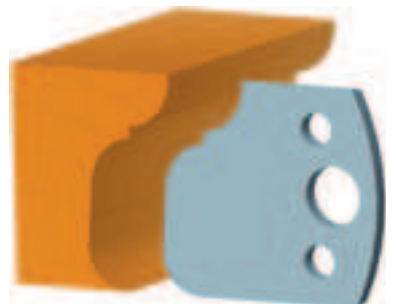
Order No. 803-2065
40mm width 4mm thickness



Order No. 803-2066 4
40mm width 4mm thickness



Order No. 803-2067
40mm width 4mm thickness



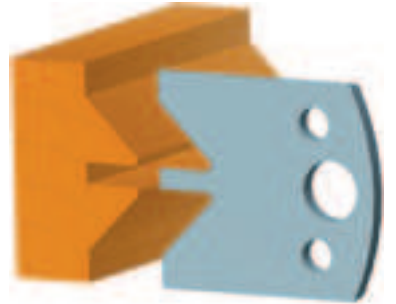
Order No. 803-2068
40mm width 4mm thickness



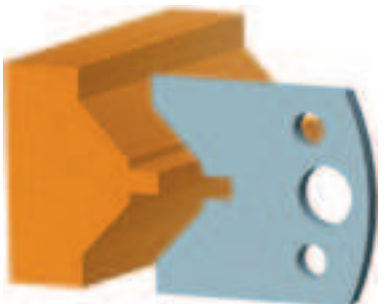
Order No. 803-2069
40mm width 4mm thickness



Order No. 803-2070
40mm width 4mm thickness



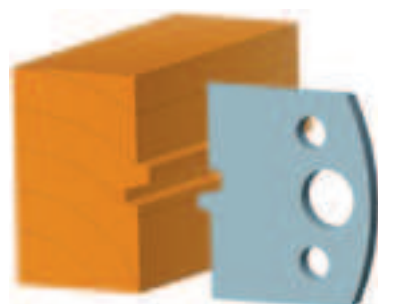
Order No. 803-2071
40mm width 4mm thickness



Order No. 803-2072
40mm width 4mm thickness



Order No. 803-2073
40mm width 4mm thickness



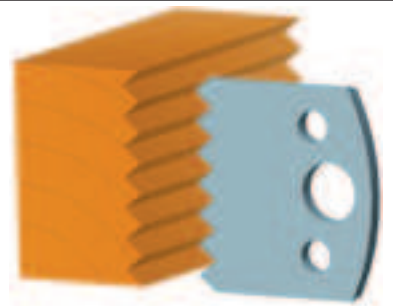
Order No. 803-2074
40mm width 4mm thickness



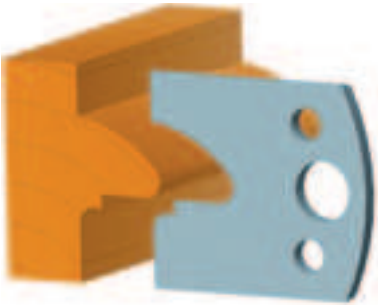
Order No. 803-2075
40mm width 4mm thickness



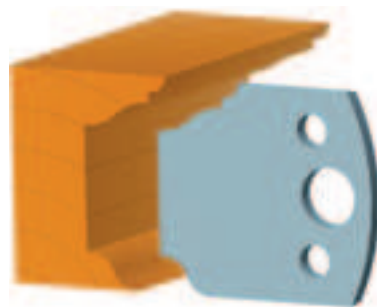
Order No. 803-2076
40mm width 4mm thickness



Order No. 803-2077
40mm width 4mm thickness



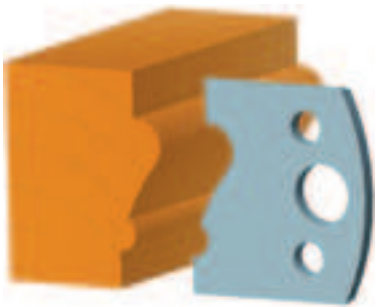
Order No. 803-2078
40mm width 4mm thickness



Order No. 803-2079
40mm width 4mm thickness



Order No. 803-2080
40mm width 4mm thickness



Order No. 803-2081
40mm Width 4mm Thickness



Order No. 803-2082
40mm width 4mm thickness



Order No. 803-2083
40mm width 4mm thickness



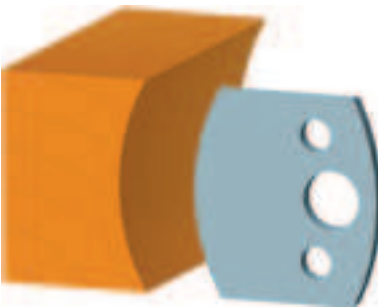
Order No. 803-2084
40mm width 4mm thickness



Order No. 803-2085
40mm width 4mm thickness



Order No. 803-2086
40mm width 4mm thickness



Order No. 803-2087
40mm width 4mm thickness



Order No. 803-2088
40mm width 4mm thickness



Order No. 803-2089
40mm width 4mm thickness



Order No. 803-2090
40mm width 4mm Thickness



Order No. 803-2091
40mm width 4mm Thickness



Order No. 803-2092
40mm width 4mm Thickness



Order No. 803-2093
40mm width 4mm Thickness



Order No. 803-2094
40mm width 4mm Thickness



Order No. 803-2095
40mm width 4mm Thickness



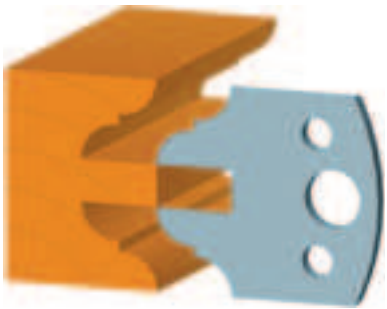
Order No. 803-2096
40mm width 4mm Thickness



Order No. 803-2097
40mm width 4mm Thickness



Order No. 803-2098
40mm width 4mm Thickness



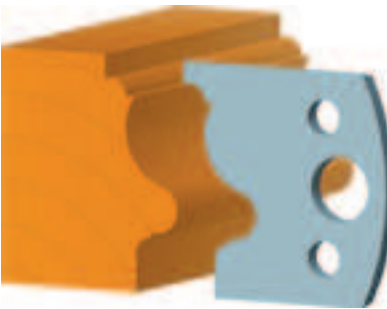
Order No. 803-2099
40mm width 4mm Thickness



Order No. 803-2100
40mm width 4mm Thickness



Order No. 803-2101
40mm width 4mm Thickness



Order No. 803-2102
40mm width 4mm Thickness



Order No. 803-2103
40mm width 4mm Thickness



Order No. 803-2104
40mm width 4mm Thickness



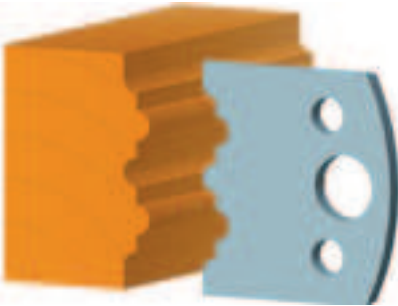
Order No. 803-2105
40mm width 4mm Thickness



Order No. 803-2106
40mm width 4mm Thickness



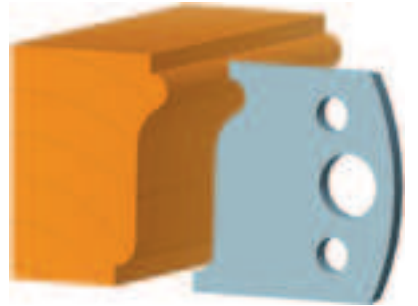
Order No. 803-2107
40mm width 4mm Thickness



Order No. 803-2108
40mm width 4mm Thickness



Order No. 803-2109
40mm width 4mm Thickness



Order No. 803-2110
40mm width 4mm Thickness



Order No. 803-2111
40mm width 4mm Thickness



Order No. 803-2112
40mm width 4mm Thickness



Order No. 803-2113
40mm width 4mm Thickness



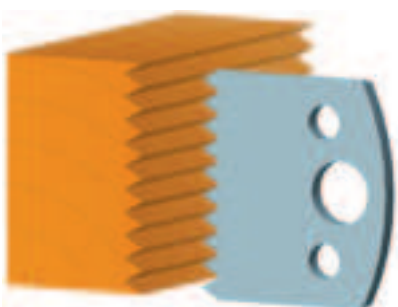
Order No. 803-2114
40mm width 4mm Thickness



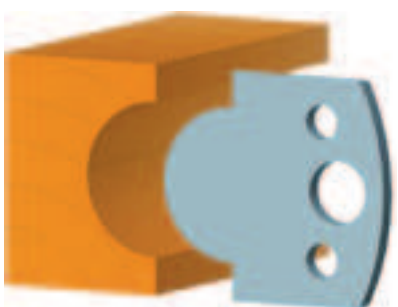
Order No. 803-2115
40mm width 4mm Thickness



Order No. 803-2116
40mm width 4mm Thickness



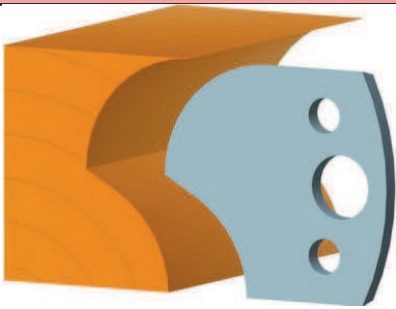
Order No. 803-2117
40mm width 4mm Thickness



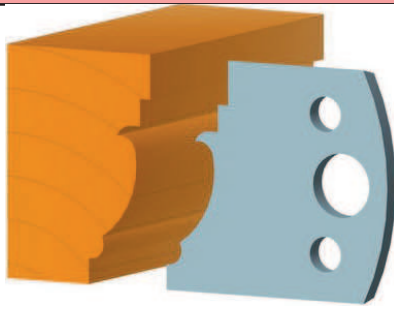
Order No. 803-2118
40mm width 4mm Thickness



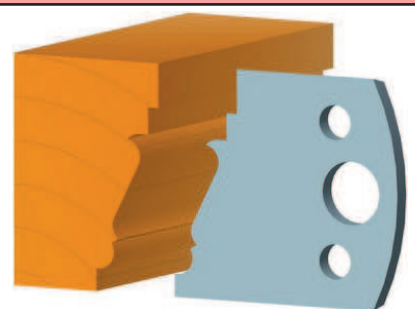
Order No. 803-2119
40mm width 4mm Thickness



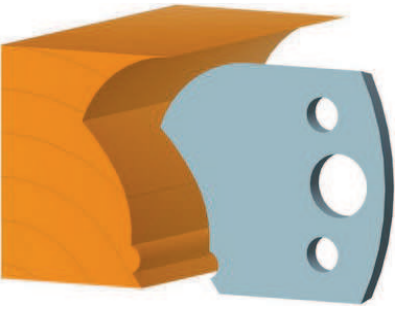
Order No. 803-2120
40mm width 4mm Thickness



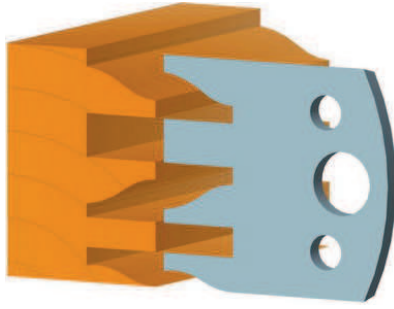
Order No. 803-2121
40mm width 4mm Thickness



Order No. 803-2122
40mm width 4mm Thickness



Order No. 803-2123
40mm width 4mm Thickness



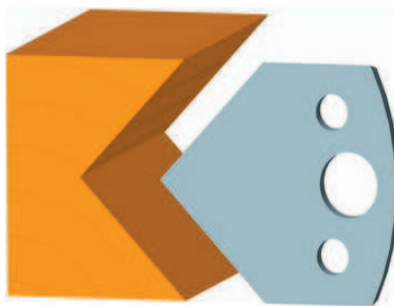
Order No. 803-2124
40mm width 4mm Thickness



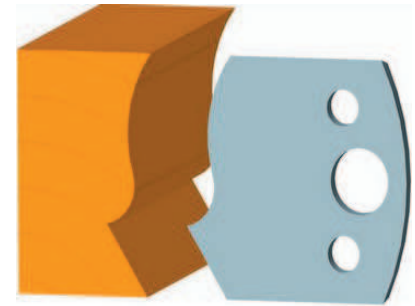
Order No. 803-2125
40mm width 4mm Thickness



Order No. 803-2126
40mm width 4mm Thickness



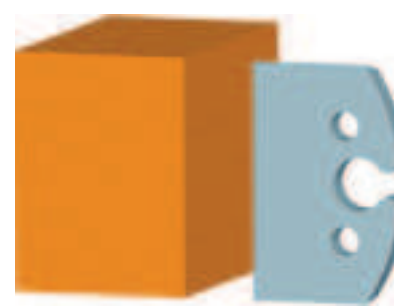
Order No. 803-2127
40mm width 4mm Thickness



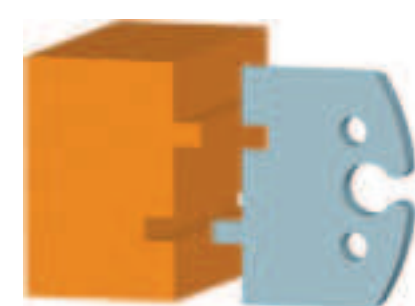
Order No. 803-2128
40mm width 4mm Thickness



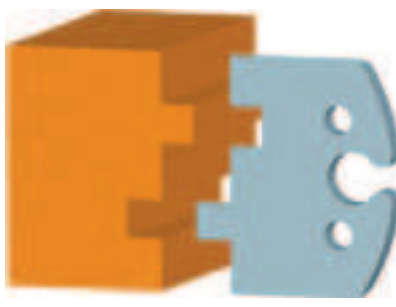
Order No. 803-2129
40mm width 4mm Thickness



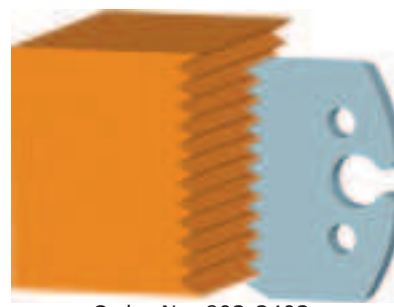
Order No. 803-2400
50mm width 5.5mm Thickness



Order No. 803-2401
50mm width 5.5mm Thickness



Order No. 803-2402
50mm width 5.5mm Thickness



Order No. 803-2403
50mm width 5.5mm Thickness



Order No. 803-2404
50mm width 5.5mm Thickness



Order No. 803-2405
50mm width 5.5mm thickness



Order No. 803-2406
50mm width 5.5mm thickness



Order No. 803-2407
50mm width 5.5mm thickness



Order No. 803-2408
50mm width 5.5mm thickness



Order No. 803-2409
50mm width 5.5mm thickness



Order No. 803-2410
50mm width 5.5mm thickness



Order No. 803-2411
50mm width 5.5mm thickness



Order No. 803-2412
50mm width 5.5mm thickness



Order No. 803-2413
50mm width 5.5mm thickness



Order No. 803-2414
50mm width 5.5mm thickness



Order No. 803-2415
50mm width 5.5mm Thickness



Order No. 803-2416
50mm width 5.5mm Thickness



Order No. 803-2417
50mm width 5.5mm Thickness



Order No. 803-2418
50mm width 5.5mm Thickness



Order No. 803-2419
50mm width 5.5mm Thickness



Order No. 803-2420
50mm width 5.5mm thickness



Order No. 803-2421
50mm width 5.5mm thickness



Order No. 803-2422
50mm width 5.5mm thickness



Order No. 803-2423
50mm width 5.5mm thickness



Order No. 803-2424
50mm width 5.5mm thickness



Order No. 803-2425
50mm width 5.5mm thickness



Order No. 803-2426
50mm width 5.5mm thickness



Order No. 803-2427
50mm width 5.5mm thickness



Order No. 803-2428
50mm width 5.5mm thickness



Order No. 803-2429
50mm width 5.5mm thickness



Order No. 803-2430
50mm width 5.5mm Thickness



Order No. 803-2431
50mm width 5.5mm Thickness



Order No. 803-2432
50mm width 5.5mm Thickness



Order No. 803-2433
50mm width 5.5mm Thickness



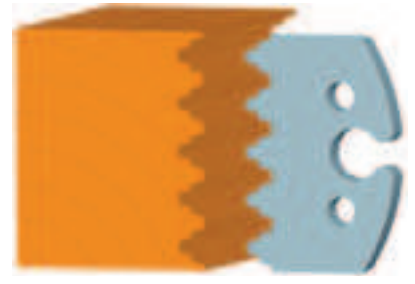
Order No. 803-2434
50mm width 5.5mm Thickness



Order No. 803-2435
50mm width 5.5mm thickness



Order No. 803-2436
50mm width 5.5mm thickness



Order No. 803-2437
50mm width 5.5mm thickness



Order No. 803-2438
50mm width 5.5mm thickness



Order No. 803-2439
50mm width 5.5mm thickness



Order No. 803-2440
50mm width 5.5mm thickness



Order No. 803-2441
50mm width 5.5mm thickness



Order No. 803-2442
50mm width 5.5mm thickness



Order No. 803-2443
50mm width 5.5mm thickness



Order No. 803-2444
50mm width 5.5mm thickness



Order No. 803-2445
50mm width 5.5mm Thickness



Order No. 803-2446
50mm width 5.5mm Thickness



Order No. 803-2447
50mm width 5.5mm Thickness



Order No. 803-2448
50mm width 5.5mm Thickness



Order No. 803-2449
50mm width 5.5mm Thickness



Order No. 803-2450
50mm width 5.5mm thickness



Order No. 803-2451
50mm width 5.5mm thickness



Order No. 803-2452
50mm width 5.5mm thickness



Order No. 803-2453
50mm width 5.5mm thickness



Order No. 803-2454
50mm width 5.5mm thickness



Order No. 803-2455
50mm width 5.5mm thickness



Order No. 803-2456
50mm width 5.5mm thickness



Order No. 803-2457
50mm width 5.5mm thickness



Order No. 803-2458
50mm width 5.5mm thickness

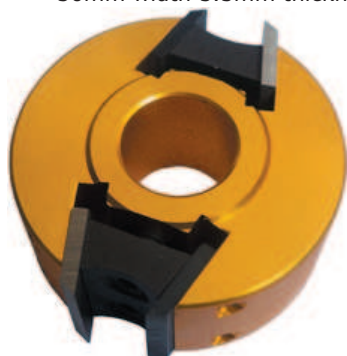


Order No. 803-2459
50mm width 5.5mm thickness

Universal Profile Cutter Head



* Kits for Cutter Head, Profile Cutters and Limitors with
for 6, 12, 24 and 36, 37 sets.
* knife profile option by the customer's request

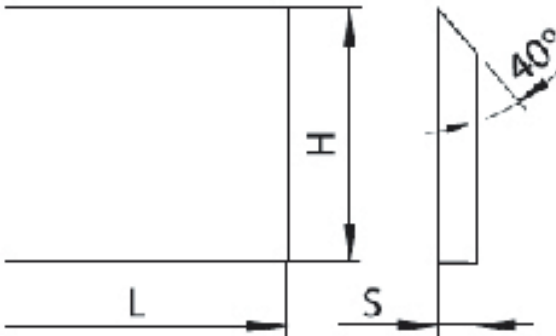
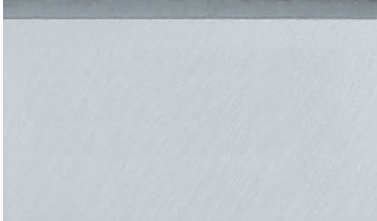


Customer's sizes are available.

Diameter	Bore Dia.	Height	Z	Max. Speed (RPM)	
93	30	40	2	7000-9000	MAN (With limitor)
93	30	50	2	7000-9000	
120	30	40	2	7000-9000	
120	30	50	2	7000-9000	
93	30	40	2	7000-9000	MEC (without limitor)
93	30	50	2	7000-9000	
120	30	40	2	7000-9000	
120	30	50	2	7000-9000	

Planer Knives

- * For wood planer and thicknessers.
- * High speed steel, M2
- * size in imperial sizes are available.
- * Hardend to HRC 58 to 64.
- * Customized sizes are available.

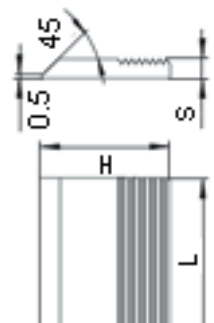


LxHxS (mm)			
100x20x3.0	100x25x3.0	100x30x3.0	100x35x3.0
120x20x3.0	120x25x3.0	120x30x3.0	120x35x3.0
130x20x3.0	130x25x3.0	130x30x3.0	130x35x3.0
150x20x3.0	150x25x3.0	150x30x3.0	150x35x3.0
180x20x3.0	180x25x3.0	180x30x3.0	180x35x3.0
210x20x3.0	210x25x3.0	210x30x3.0	210x35x3.0
240x20x3.0	240x25x3.0	240x30x3.0	240x35x3.0
260x20x3.0	260x25x3.0	260x30x3.0	260x35x3.0
310x20x3.0	310x25x3.0	310x30x3.0	310x35x3.0
400x20x3.0	400x25x3.0	400x30x3.0	400x35x3.0
410x20x3.0	410x25x3.0	410x30x3.0	410x35x3.0
450x20x3.0	450x25x3.0	450x30x3.0	450x35x3.0
500x20x3.0	500x25x3.0	500x30x3.0	500x35x3.0
510x20x3.0	510x25x3.0	510x30x3.0	510x35x3.0
530x20x3.0	530x25x3.0	530x30x3.0	530x35x3.0
610x20x3.0	610x25x3.0	610x30x3.0	610x35x3.0
640x20x3.0	640x25x3.0	640x30x3.0	640x35x3.0
710x20x3.0	710x25x3.0	710x30x3.0	710x35x3.0
810x20x3.0	810x25x3.0	810x30x3.0	810x35x3.0
910x20x3.0	910x25x3.0	910x30x3.0	910x35x3.0
	1000x25x3.0	1000x30x3.0	1000x35x3.0
	1010x25x3.0	1010x30x3.0	1010x35x3.0
	1050x25x3.0	1050x30x3.0	1050x35x3.0
	1220x25x3.0	1220x30x3.0	1220x35x3.0

- * High speed steel.
- * For wood shapers, profile cutting millers, planers and thicknessers.
- * Serrated back knives in metric and inch sizes
- * Hardened to 58 to 63 HRC.
- * 60° or 90° serration.
- * Standard 45°cutting angle
- * Customized sizes, angles, hardness available.

Serrated Back Knives

LxHxS (mm)								
30x30x4	30x40x4	30x40x6	30x50x6	30x60x6	30x40x8	30x50x8	30x60x8	30x80x8
40x30x4	40x40x4	40x40x6	40x50x6	40x60x6	40x40x8	40x50x8	40x60x8	40x80x8
50x30x4	50x40x4	50x40x6	50x50x6	50x60x6	50x40x8	50x50x8	50x60x8	50x80x8
60x30x4	60x40x4	60x40x6	60x50x6	60x60x6	60x40x8	60x50x8	60x60x8	60x80x8
70x30x4	70x40x4	70x40x6	70x50x6	70x60x6	70x70x8	70x50x8	70x60x8	70x80x8
80x30x4	80x40x4	80x40x6	80x50x6	80x60x6	80x70x8	80x50x8	80x60x8	80x80x8
100x30x4	100x40x4	100x40x6	100x50x6	100x60x6	100x70x8	100x50x8	100x60x8	100x80x8
130x30x4	130x40x4	130x40x6	130x50x6	130x60x6	130x70x8	130x50x8	130x60x8	130x80x8
150x30x4	150x40x4	150x40x6	150x50x6	150x60x6	150x70x8	150x50x8	150x60x8	150x80x8
180x30x4	180x40x4	180x40x6	180x50x6	180x60x6	180x70x8	180x50x8	180x60x8	180x80x8
210x30x4	210x40x4	210x40x6	210x50x6	210x60x6	210x70x8	210x50x8	210x60x8	210x80x8
230x30x4	230x40x4	230x40x6	230x50x6	230x60x6	230x70x8	230x50x8	230x60x8	230x80x8
260x30x4	260x40x4	260x40x6	260x50x6	260x60x6	260x70x8	260x50x8	260x60x8	260x80x8
500x30x4	500x40x4	500x40x6	500x50x6	500x60x6	500x70x8	500x50x8	500x60x8	500x80x8
600x30x4	600x40x4	600x40x6	600x50x6	600x60x6	600x70x8	600x50x8	600x60x8	600x80x8
635x30x4	635x40x4	635x40x6	635x50x6	635x60x6	635x70x8	635x50x8	635x60x8	635x80x8
650x30x4	650x40x4	650x40x6	650x50x6	650x60x6	650x70x8	650x50x8	650x60x8	650x80x8





Wooden Work Bench

Specifications

Overall Dimension: 126x61x84CM
Packing Size: 132x53x17CM
Gross Weight: 29KG
Net Weight: 26KG
Container Qty: 500PCS/40FT, 250PCS/20FT
Material: GERMANY BEECH
Packing Inner packing: 1parts/epe;air cushion film.
Outer packing: in carton.

Order No.700-0050



Wooden Work Bench

Specifications

Overall Dimension: 152x62x85CM
Packing Size: 143x53x15CM
Gross Weight: 35KG
Net Weight: 32KG
Container Qty: 532PCS/40FT, 256PCS/20FT
Material: GERMANY BEECH
Packing Inner packing: 1parts/epe;air cushion film.
Outer packing: in carton.

Order No.700-0051



Wooden Work Bench

Specifications

Overall Dimension: 126x61x84CM
Packing Size: 132x53x23CM
Gross Weight: 60KG
Net Weight: 56KG
Container Qty: 360PCS/40FT, 175PCS/20FT
Material: GERMANY BEECH
Packing Inner packing: 1parts/epe;air cushion film.
Outer packing: in carton.

Order No.700-0052



Wooden Work Bench

Specifications

Overall Dimension: 210x78x81.5CM
Packing Size: 215x67x21CM
Net Weight: 68KG
Gross Weight: 76KG
Container Qty: 168PCS/40FT, 84PCS/20FT
Material: Germany Beech
Packing Inner packing: 1parts/epe;air cushion film.
Outer packing: in carton.

Order No.700-0053



Wooden Work Bench

Specifications

Overall Dimension: 163x163x81.5CM
Packing Size: 167x135x22CM
Net Weight: 102KG
Gross Weight: 110KG
Container load: 112PCS/40FT; 52PCS/20FT
Material: Germany Beech
Packing Inner packing: 1parts/epe;air cushion film.
Outer packing: in carton.

Order No.700-0054



Wooden Work Bench

Specifications

Overall Dimension: 183x115x81.5CM
Packing Size: 186x85x23CM
Net Weight: 78KG
Gross Weight: 85KG
Container Qty: 130PCS/40' GP;65PCS/20' GP
Material: Germany Beech
Packing Inner packing: 1parts/epe;air cushion film.
Outer packing: in carton.

Order No.700-0055



Wooden Work Bench

Specifications

Overall Dimension: 210x78x81.5CM
Packing Size: 216x67x25CM
Net Weight: 127KG
Gross Weight: 135KG
Container Qty: 156PCS/40' GP;75PCS/20' GP
Material: Germany Beech
Packing Inner packing: 1parts/epe,air cushion film.
Outer packing: in carton.

Order No.700-0056



Wooden Work Bench

Specifications

Overall Dimension: 160x60x86CM
Packing Size: 170x52x21CM
Net Weight: 58KG
Gross Weight: 64KG
Container Qty: 280PCS/40' GP;140PCS/20' GP
Material: Germany Beech
Packing Inner packing: 1parts/epe;air cushion film.
Outer packing: in carton.

Order No.700-0057

Foldable Work Bench

Specifications

- * Germany Beech
- * Overall Dimension: 123x77x120CM (Before folding)
123x24x120CM (After folding):
- * Shipping size: 125x116x25CM
- * Net Weight: 47KG
- * Gross Weight: 53KG
- * 20FT Container Load: 78PCS/20' GP

Order No.700-0058



Jewelry Work Bench

- * Pine Wood
- * Overall dimension: L99xW49.5xH96CM
- * Shipping Size: L102xW52xH21CM, L60xW47xH21CM
- * Net Weight: 34KG
- * Gross Weight: 37KG
- * Container Load: 350PCS/40'GP, 160PCS/20'GP
- * Inner packing: 1parts/epe, air cushion film.
- * Outer packing: in carton.

Order No.700-0063



Jewelry Stand



* German Beech.

Order No.700-0065

Jewelry Pallet



* Beech wood paper

Order No.700-0067

Wood Jointer

Features:

- * Precision ground cast iron table easily adjustable by the handwheel.
- * Safety cutterhead guard pivots out of the way of work during operation.
- * Fence is attached in the front of the infeed table.
- * TEFC motor.
- * Closed ladder-shaped stand with four rubber feet.
- * Three HSS blades fitted right in with cutterhead.



Optional spiral cutterhead

Order No.	800-0041	800-0067	800-0071	800-0085
Maximum width of cut	102mm	152mm	175mm	200mm
Motor Input Power	3/4HP	1HP	1hp	2hp
Cutterhead speed	4400rpm/50HZ or 5200rpm/60HZ.	4400rpm/50HZ or 5200rpm/61HZ.	4400rpm/50HZ or 5200rpm/62HZ.	4400rpm/50HZ or 5200rpm/63HZ.
Number of Knives	3	3	3	3
Cutterhead Diameter	61mm	61mm	61mm	65mm
Table size	900mmx130mm	1030mmx180mm	1080x210mm	1340mmx230mm
Maximum depth of cut	3.175mm	3.175mm	3.175mm	3.175mm
Rabbeting capacity	12.7mm	12.7mm	12.7mm	10mm
Fence Size	630mmx78mm	875x98mm	875x98mm	875x98mm
Fence Tilt	45°in and out	45°in and out	45°in and out	45°in and out
Cutting Width	102mm	152mm	175mm	200mm
Max. Cutting Depth	3.175mm	3.175mm	3.175mm	3.175mm
Reabbeting	12.7mm	12.7mm	12.7mm	10mm
Net Weight	65kg	83.8kg	98kg	130kg
Shipping Weight	70kg	90kg	105kg	146kg
20FT container load	260pcs	198pcs	160pcs	90pcs

Wood Jointer 6"

Features:

- * Precision ground cast iron table.
- * Precision gib adjustment on dovetailed ways.
- * Cabinet stand with built-in Chip chute.
- * Handwheels for convenient table adjustment.
- * Spring loaded front and rear blade guard for operator protection.

Specifications:

Motor: 1HP, 110/220V with paddle switch.
 Cutterhead: 4400 rpm 50HZ or 5200 rpm 60HZ.
 Number of Knives: 3
 Cutterhead Diameter: 61mm
 Table size: 1215mmx184mm
 Maximum depth of cut: 3.175mm
 Maximum width of cut: 152mm
 Rabbeting capacity: 12.7mm
 Fence: 708mmx98mm with positive stops
 at +/-45° and 90°
 Shipping Weight: 85kg (jointer); 31kg (stand)
 20FT container load: 140pcs



Optional spiral cutterhead



Order NO. 800-0063

Wood Jointer 6"

Features:

- * Precision ground cast iron table.
- * Precision gib adjustment on dovetailed ways.
- * Closed stand with four rubber feet.
- * Handwheels for convenient table adjustment.
- * Spring loaded front and rear blade guard for operator protection.

Specifications:

Motor: 1HP, 110/220V with paddle switch.
 Cutterhead: 4400 rpm 50HZ or 5200 rpm 60HZ.
 Number of Knives: 3
 Cutterhead Diameter: 61mm
 Table size: 1215mmx184mm
 Maximum depth of cut: 3.175mm
 Maximum width of cut: 152mm
 Rabbeting capacity: 12.7mm
 Fence: 708mmx98mm with positive stops at +/-45° and 90 °
 Shipping Weight: 118kg
 20FT container load: 140pcs



Optional spiral cutterhead



Order NO. 800-0064

Wood Jointer 6"

Features:

- * Precision ground cast iron table.
- * Totally enclosed fan colled motor.
- * Standard 4" Chip chute.
- * Adjustment dials under both tables for accurate and easy adjusment.

Specifications:

Motor: 1HP, 110/220V with paddle switch.
 Cutterhead: 4400 rpm 50HZ or 5200 rpm 60HZ.
 Number of Knives: 3
 Cutterhead Diameter: 61mm
 Table size: 1168mmx184mm
 Maximum depth of cut: 3.175mm
 Maximum width of cut: 152mm
 Rabbeting capacity: 12.7mm
 Fence: 708mmx98mm with positive stops at +/-45° and 90°
 Shipping Weight: 104kg (jointer)
 20FT container load: 160pcs



Optional spiral cutterhead



Order NO. 800-0065

Wood Jointer 6"

Features:

- * Precision ground cast iron table.
- * Precision gib adjustment on dovetailed ways.
- * Cabinet stand with built-in Chip chute.
- * Handwheels for convenient table adjustment.
- * Spring loaded front and rear blade guard for operator protection.



Optional spiral cutterhead



Convenient control switch

Center mounted fence

1415x184mm table

Handwheel for precision table adjust

Specifications:

- * Motor: 1HP, 110/220V
- * Cutterhead: 4400 rpm 50HZ or 5200 rpm 60HZ.
- * Number of Knives: 3
- * Cutterhead Diameter: 61mm
- * Table size: 1415mmx184mm
- * Maximum depth of cut: 3.175mm
- * Maximum width of cut: 152mm
- * Rabbeting capacity: 12.7mm
- * Fence: 708mmx98mm with positive stops at +/-45° and 90 °
- * Shipping Weight: 97kg (jointer); 33kg (stand)
- * 20FT container load: 130pcs

Rabbeting table

4" dust chute

Powder coated stand

Order No. 800-0061

Wood Jointer 6"

- * Totally enclosed fan cooled motor for long life.
- * Center mounted fence positively stops at 90° and 45° in and out.
- * Twin adjustable dials under table.
- * Tables are rabbetted ledged.
- * Built-in dust collection hoop-up.

Specifications:

- * Motor: 1HP, 110/220V
- * Cutterhead: 4400 rpm 50HZ or 5200 rpm 60HZ.
- * Number of Knives: 3
- * Cutterhead Diameter: 61mm
- * Table size: 1168mmx184mm
- * Maximum depth of cut: 3.175mm
- * Maximum width of cut: 152mm
- * Rabbeting capacity: 12.7mm
- * Fence: 708mmx98mm with positive stops at +/-45° and 90 °
- * Shipping Weight: 104kg
- * Machine weight: 97.7kg
- * Shipping size: 122x48x28cm
- * 20FT container load: 160pcs



Convenient and smooth table adjust system



Optional spiral cutterhead

Order No. 800-0069

Wood Jointer 6"

Features:

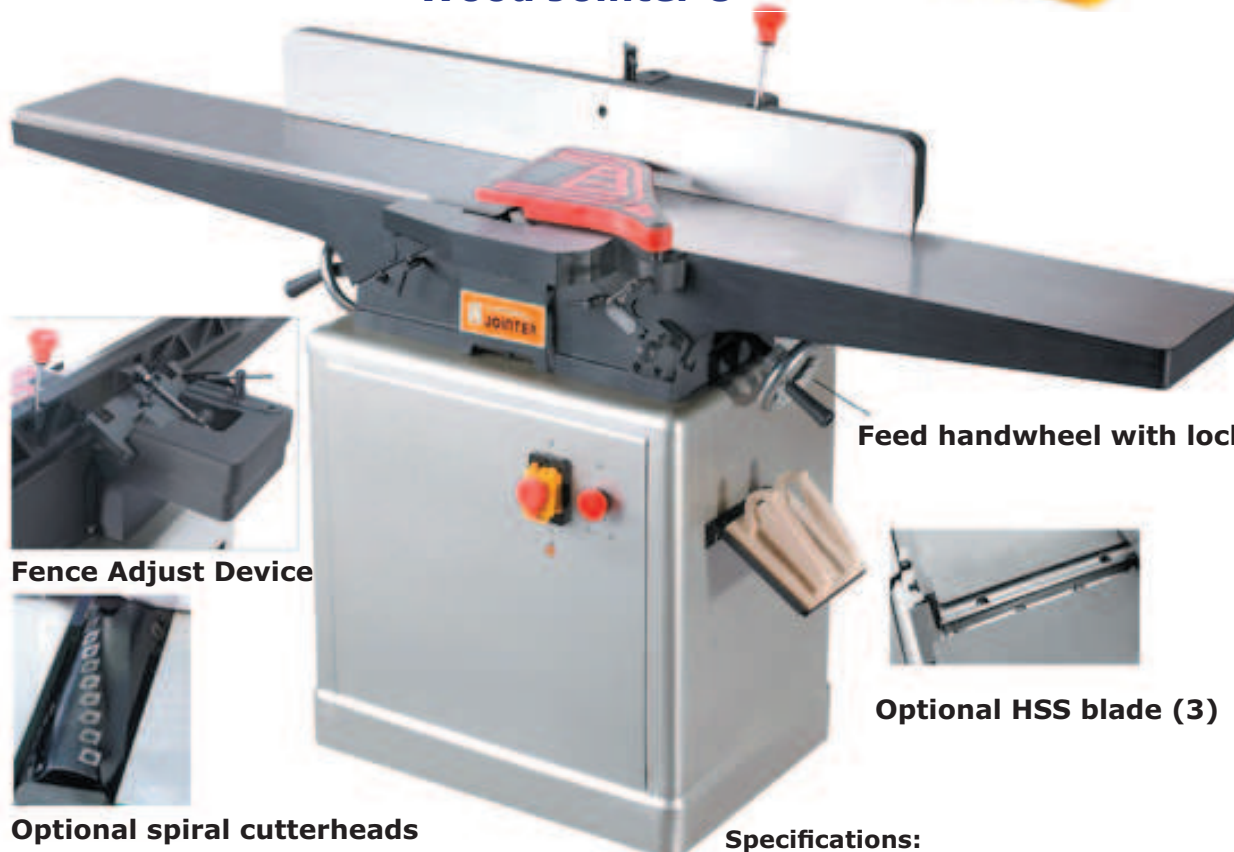
- * Portable wood jointer with series mc
- * Precision moulded plastic base.
- * Die aluminium casting table.
- * Push block for easy work.
- * Light weight.

Specifications:

- * Motor input power: 1.5HP
- * Table size: 710mmx155mm
- * Cutterhead: 8000-16000rpm
- * Number of Knives: 2
- * Cutterhead Diameter: 52mm
- * Table size: 498x67mm
- * Tilt: 45° out.
- * Maximum depth of cut: 3.175mm
- * Maximum width of cut: 155mm
- * Weight: 13/15kg
- * Shipping Size: 78x35x33cm.
- * 20FT container load: 340pcs

Order NO. 800-0070

Wood Jointer 8"



Feed handwheel with lock device



Optional HSS blade (3)



Fence Adjust Device



Optional spiral cutterheads

Features:

- * Precision ground cast iron table.
- * Fully 8" wide cutting capacity.
- * Enclosed steel stand with a 2HP TEFC motor.
- * Extra large center-mounted cast iron fence provides max. work support.
- * Precision gib adjustment on dovetailed ways.
- * Three-knife cutterhead rapidly cuts to produce superior finish.
- * Infeed and outfeed tables are easily adjusted by a handwheel with a convenient locking bar.

Order NO. 800-0083

Specifications:

- Motor: 2HP, 110/220V.
- Cutterhead: 4800 rpm 50HZ or 5900 rpm 60HZ.
- Number of Knives: 3
- Cutterhead Diameter: 75mm
- Table size: 1800mmx230mm
- Maximum depth of cut: 3.175mm
- Maximum width of cut: 200mm
- Rabbeting capacity: 12.7mm
- Fence: 1010mmx120mm with positive stops at -45° in and out.
- Shipping Weight: 158kg (jointer), 50kg (stand)
- Shipping size: 185x43x305cm (Plywood)
- Stand: 66x46x61cm (carton)
- 20FT container load: 70pcs

Wood Jointer 12"



Rack and pinion fence



Optional spiral cutterhead

Order No.	800-0121	800-0122
Maximum width of cut	305mm	305mm
Motor Input Power	3HP	3HP
Cutterhead speed	4600rpm/50HZ or 5500rpm/60HZ.	
Number of Knives	3	3
Cutterhead Diameter	98mm	98mm
Table size	2250mmx320mm	1830mmx320mm
Maximum depth of cut	3.175mm	3.175mm
Rabbeting capacity	12.7mm	12.7mm
Fence Size	1050mmx105mm	1050mmx105mm
Fence Tilt	45° in and out	45° in and out
Max. Cutting Depth	3.175mm	3.175mm
Reabbeting	16mm	16mm
Net Weight	390kg	347kg
Shipping Weight	450kg	393kg
Shipping Size	230x61x91cm	190x61x91cm
20FT container load	16pcs	16pcs

Wood Jointer 8"

Features:

- * Precision ground cast iron table.
- * Fully 8" wide cutting capacity.
- * Enclosed steel stand with a 2HP TEFC motor.
- * Extra large center-mounted cast iron fence provides max. work support.
- * Precision gib adjustment on dovetailed ways.
- * Three-knife cutterhead rapidly cuts to produce superior finish.
- * Infeed and outfeed tables are easily adjusted by a handwheel with a convenient locking bar.

Specifications:

- Motor: 2HP, 110/220V.
- Cutterhead: 4800 rpm 50HZ or 5900 rpm 60HZ.
- Number of Knives: 3
- Cutterhead Diameter: 75mm
- Table size: 1880mmx225mm
- Maximum depth of cut: 3.175mm
- Maximum width of cut: 204mm
- Rabbeting capacity: 12.7mm
- Fence: 890mmx128mm with positive stops at +/-45° and 90 °.
- Shipping Weight: 260kg
- 20FT container load: 65pcs



Optional spiral cutterhead



Rack and pin system



Infeed handle lever and locking adjustment

Order NO. 800-0082

Wood Jointer 6"

Features:

- * Compact bench top design.
- * Machined cast-iron surface and steel base.
- * A mine impeller sucks the chips away.
- * Built in dust collector.
- * Quick knife adjustment.

Specifications:

- Motor: 1200w input power, 110/220V.
- Cutterhead: 8000 rpm 50HZ or 1000 rpm 60HZ.
- Number of Knives: 2
- Cutterhead Diameter: 50mm
- Table size: 730mmx160mm
- Maximum depth of cut: 3.175mm
- Maximum width of cut: 155mm
- Fence: 580mmx106mm
- Fence: Tilt 45° in and out.
- Shipping Weight: 42kg
- Shipping Size: 84x38x28cm
- 20FT container load: 330pcs



Optional spiral cutterhead



BACK VIEW OF FENCE ADJUSTMENT DEVICE



Optional Stand

Order NO. 800-0068

Wood Planer/Moulder 13"



Features:

- * Adequately strong feeding mechanism.
- * Precision ground cast iron table.
- * Rubberized steel feed rollers.
- * Powder coated paint.
- * Special gauge for easy molding work setup.

Motor Power: 1.5HP
 Table Size: 450mmx358mm
 Cutterhead Speed: 5000rpm
 Number of knives: 3
 Knife Diameter: 68mm
 Cutting speed: 15000 cuts/min
 Max. Cutting Width: 13"/325mm
 Max. Cutting Height: 6"/150mm
 Max. Cutting Depth: 1/8"/3.175mm
 Max. Profile Depth: 3/4"/19mm
 Shipping Weight: 120kg
 Shipping Size: 71x48x71cm



Optional spiral cutterheads

Order No: 800-0130

Wood Planer 15"

Features:

- * Two-speed gear box.
- * Four precision ground steel columns adjusted by handwheel.
- * Precision ground cast iron table with adjustable bed rollers.
- * Gearbox features an automatic chain tension device.
- * 4" dust port angled to the side for efficient chip removal.



Order No.	800-0150	800-0152
Motor Input	2HP	2HP
Table Size	450x382mm	450x382mm
Cutterhead Speed	5000rpm	5000rpm
Cutterhead Dia.	75mm	75mm
Number of Knives	3	3
Cutting Width/Depth	381/4.8mm	381/4.8mm
Lift Distance	200mm	200mm
Shipping Weight	245kg	253kg
Shipping Size	81x62x82cm	81x62x113cm

Wood Planer

Features:

- * Chain driven automatic feed rollers.
- * Device prevents board kick-back.
- * 2 automatic feed speed.
- * Built in dust exhaust hood.
- * Quick and accurate table adjustment with the handwheel on the positive gear drive system.
- * Precision ground and polished table.
- * Overload protection switch.
- * Digital readout guarantees accurate thickness.



Order No.	800-0151	800-0160	800-0200
Motor Input	3HP	2HP	3HP
Table Size	508×382mm	446×406mm	446×406mm
Cutterhead Speed	5000rpm	5000rpm	5000/6000rpm
Cutterhead Dia.	76mm	75mm	3.15"
Number of Knives	3	3	3
Cutting Width/ Depth	381/3mm	406/4.8mm	508mm
Lift Distance	152mm	200mm	204mm
Shipping Weight	200kg	272kg	375kg
Shipping Size	86×56×66cm	81×62×82cm	96×71×109cm

Features:

- * Powerful 3HP TEFC motor.
- * Four precision ground steel columns driven by chain adjustment.
- * Adjustable steel feed roller extension table.
- * Serrated infeed and polyurethane outfeed roller.
- * Precision ground handle wheel with locking bar.

Order No. 800-0151



Optional spiral cutterheads

WOOD SHAPER

800-0140



800-0147



Features:

- * Extra loge cast iron table with standard wing.
- * Heavy duty interchangeable spindles.
- * Protection device.
- * TEFC heavy duty 3HP motor.
- * Cast iron cabinet stand.

Order No.	800-0140	800-0147
Motor	Input 3HP	Input 3HP
Table Size	695×555mm	695×555mm
Spindle Speed 50Hz	3500 or 7000rpm	3500 or 7000rpm
Spindle Speed 60Hz	4300 or 8900rpm	4300 or 8900rpm
Spindle Diameter	30 or 35mm	30 or 35mm
Max. Lifting Height	90mm	90mm
Shipping Weight	225kg	200kg
Shipping Size	76×61×114cm	81×67×110cm



Optional cutterheads

10" Planer Thicknesser



Order No.	800-0145
Input Motor	1.5HP
Cutterhead speed 50/60Hz	5200rpm/6400rpm
Number of Knives	3
Cutterhead Diameter	64mm
Fence Size/Tilt	610×110mm/45°out
Cutting Width/ Depth	260mm/3mm
Cutting Table Size	1060×340mm
Thicknesser Width/Depth/Height	260mm/1mm/160mm
Thicknesser Table Size	425×266mm

WOOD SHAPER



800-0141



Optional cutterheads



800-0142

Order No.	800-0141	800-0142
Motor	Input 1.5HP	Input 1.5HP
Table (LxW)	610x534mm	610x534mm
Spindle Speed 50Hz	5800/8300rpm	5800/8300rpm
Spindle Speed 60Hz	7000/10000rpm	7000/10000rpm
Spindle Diameter	1/2" or 3/4"	1"
Mortising capacity (Lift Distance)	75mm	75mm
Weight	118/140kg	138/160kg
Packing Size	655x575x1100mm	655x575x1100mm

3/4" Wood Shaper

- * Interchangeable 1/2 and 3/4 cutter spindle.
- * Router bit spindles accepts 1/4" and 1/2".
- * Magnetic switch with thermal overload protector.
- * Shielded and lubricated ball bearings.
- * Large and precision ground cast iron table.

10" Planer Thicknesser



Optional spiral cutterhead



Order No.	800-0146
Input Motor	2HP
Cutterhead speed 50/60Hz	5200rpm/6400rpm
Number of Knives	3
Cutterhead Diameter	64mm
Fence Size/Tilt	610x110mm/45°out
Cutting Width/ Depth	260mm/3mm
Cutting Table Size	1060x340mm
Thicknesser Width/Depth/Height	260mm/1mm/160mm
Thicknesser Table Size	425x266mm

BELT & DISC SANDER



Features:

- *Convenient, quick-release lever makes belt changed and adjustment snap
- *Steel pulley cover
- *Precision ground cast iron table
- *Ball bearing construction
- *Heavy duty miter gauge
- *Powder coated paint

Order No.	800-0318	800-0319	800-0313	800-0312
Motor Input	3/4HP	3/4HP	1HP	1HP
Belt Speed 50/60Hz	1020/1240fpm	1020/1240fpm	550/670mpm	550/670mpm
Disc Speed 50/60Hz	1400/1700rpm	1400/1700rpm	1400/1700rpm	(Grinder)1400/1700rpm
Belt Size (W×L)	6"×48"	6"×48"	6"×48"	6"×48"
Disc Diameter	9"	9"	9"	(Grinder)9"
Packing Weight	53kg	55kg	70kg	70kg
Packing Size (mm)	695×430×445	695×430×445	765×730×430	765×730×430



Order No.:800-0309
 Motor: 1.25HP
 Table size:417×226mm
 Dust port:70mm

WOOD SHAPER



800-0144



Optional cutterheads



800-0143

1/2" Wood Shaper

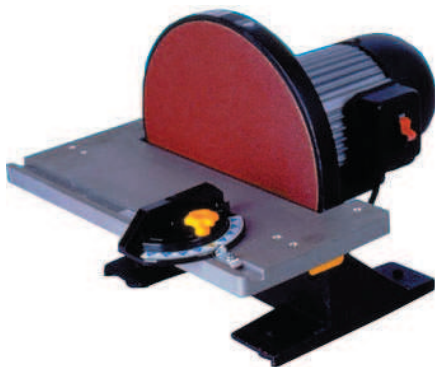
- * Router bit spindles accepts 1/4" and 1/2".
- * Paddle switch.
- * Heavy duty miter gauge.
- * Steel open stand.
- * Powder coated paint and ball bearing construction.
- * Includes 5 spindle bushings for adjusting cutter spacing.
- * Large and precision ground cast iron table.

BELT & DISC SANDER



Order No.	800-0143	800-0144
Motor	Output 3/4HP	Output 1HP
Table (LxW)	452x395mm	452x395mm
Spindle Speed 50Hz	7050rpm	11000rpm
Spindle Speed 60Hz	8500rpm	13200rpm
Spindle Diameter	1/2"	1/2"
Mortising capacity (Lift Distance)	22mm	22mm
Weight	73/77kg	91/95kg
Packing Size	640x500x585mm	700x660x585mm

DISC SANDER



Order No.:800-0308
 Motor: 1HP
 Table size:439x210mm
 Dust port:56mm
 Approval:CE/ROHS

Order No.	800-0307
Motor	550W
Speed 50/60Hz	2850/3450
Disc Size	9"
Belt Size	6"×48"
Table Size	314×158mm

BELT & DISC SANDER



800-0303



800-0305



800-0306

Order No.	800-0303	800-0305	800-0306
Motor	1/2HP	1/3HP	1/3HP
Speed 50/60Hz	2850/3450	2850/3450	2850/3450
Disc Size	6"	5"	6"
Belt Size	4"×36"	1"×30"	2"×27"
Table Size	226×160mm		183×122mm

BELT AND DISC SANDER



800-0301



800-0302



800-0304

Order No.	800-0301	800-0302	800-0304
Motor	1/2HP	1/2HP	1/2HP
Speed 50/60Hz	2850/3450	2850/3450	2850/3450
Disc Size	6"	6"	8"
Belt Size	4"×36"	4"×36"	4"×36"
Table Size	215×146mm	226×160mm	215×146mm

EDGE SANDER



800-0315



800-0314

Order No.	800-0314	800-0315
Motor Input	1.5HP	1.5HP
Speed 50/60Hz	1500/1800FPM	1500/1800FPM
Belt Size (W×L)	6"×80"	6"×80"
Front Table Size	560×265mm	560×265mm
Side Table Size	195×118mm	195×118mm
Table Tilting	+60° to -60°	+60° to -60°
Dust Chute Dia.	4"	4"
Packing Weight	140kg	107kg
Packing Size	119×54×115cm	114×79×34cm

Feature for 800-0317:

- *T-slot table and miter gauge
- *Precision ground cast iron table
- *Quick release belt tension lever
- *Oscillating sanding belt
- *Graphite coated platen
- *Shielded & lubricated ball bearing
- *3 spindle sanding drums

Order No.	800-0317
Motor Input	2HP
Speed 50/60Hz	2625/3150FPM
Belt Size (W×L)	6"×108"
Front Table Size	905×305mm
Side Table Size	290×259mm
Table Tilting	0 to 90°
Dust Chute Dia.	4"
Packing Weight	280kg
Packing Size	147×80×108cm



800-0317

EDGE SANDER

- *Powder coated paint
- *Shielded & lubricated ball bearing
- *Both horizontally and vertically use
- *Graphite coated platen
- *Table tilts from +60° to -60°

DUST COLLECTOR

- * Ideal for sanders, router tables, shapers etc.
- * Portable for site where big-size regular shop vacuum cannot handle.
- * Balanced radial steel impeller.



Order No.	800-0001	800-0002	800-0003	800-0004	800-0005	800-0006	800-0007
Motor Size	1HP/750W	1HP/750W	1HP/750W	1.5HP/750W	1.5HP/750W	2HP/1500W	3HP/2200W
Inlet Diameter	100mm	100mm	100mm	125mm	125mm	125mm	150mm
Intake Hole Size	1x100mm	1x100mm	1x100mm	2x100mm	2x100mm	2x100mm	3x100mm
Impeller Diameter	230mm	230mm	230mm	250mm	250mm	300mm	305mm
Portable Base Size	650x420mm	845x380mm	830x380mm	850x560mm	850x560mm	850x560mm	850x560mm
Bag Size (DxH)	380x530mm	370x640mm	370x640mm	500x850mm	370x610mm	500x850mm	500x850mm
Bag Capacity	2CBF	2CBF	2CBF	5.4CBF	2CBF	5.4CBF	10.8CBF
Air Speed (50HZ)	500CFM	500CFM	500CFM	750CFM	650CFM	1490CFM	2300CFM
Air Speed (60HZ)	600CFM	600CFM	600CFM	900CFM	690CFM	1790CFM	2760CFM
Packing Size (cm)	44x41x42	76x45x46	76x45x46	92x58x58	75x45x46	92x58x58	117x56x57

DUST COLLECTOR

Order No.:800-0009

Motor Size:5HP/3750W,400V
 Inlet Dia.:1x180-4x100mm
 Impeller Dia.:356mm
 Air Suction Capacity:2683CFM
 Upper Bag Size(DxH):500x1200mm
 Lower Bag Size(DxH):500x1000mm
 Overall Size:2184x2355x582mm
 Bag Capacity:15CBF
 Packing Size:1160x840x665mm



800-0009



800-0008

Order No. 800-0008

Motor Size: 5HP/3750W
 Inlet Diameter: 150mm
 Intake Hole Size: 3x100mm
 Impeller Diameter: 305mm
 Portable Base Size: 850x560mm
 Bag Size (DxH): 500x1100mm
 Bag Capacity: 15CBF
 Air Speed(50/60HZ): 2500/CF
 Packing Size: 117x56x57cm

DUST COLLECTOR



800-0010

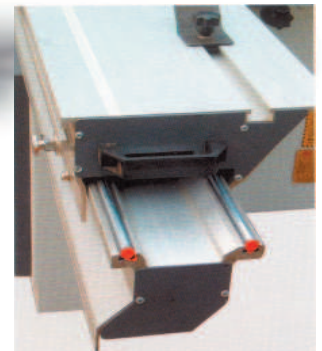
Motor Size: 1.5HP/750W
 Inlet Diameter: 100mm
 Intake Hole Size: 1x100mm
 Impeller Diameter: 230mm
 Bag Size (DxH): 380x530mm
 Bag Capacity: 2CBF
 Air Speed(50/60HZ): 500/600CFM
 Packing Size (cm): 44x41x42

Order No. 800-0010

PANEL SAW

- * Fit for processing various density boards, shaving boards, woo-based panels, ABS panels, PVC panels, organic glass plates and solid wood and others with wood structure and similar hardness.
- * Table surface oxidation treatment, beautiful and hardwearing.

801-0050



**Steel Bar structure
Sliding Table**

801-0051



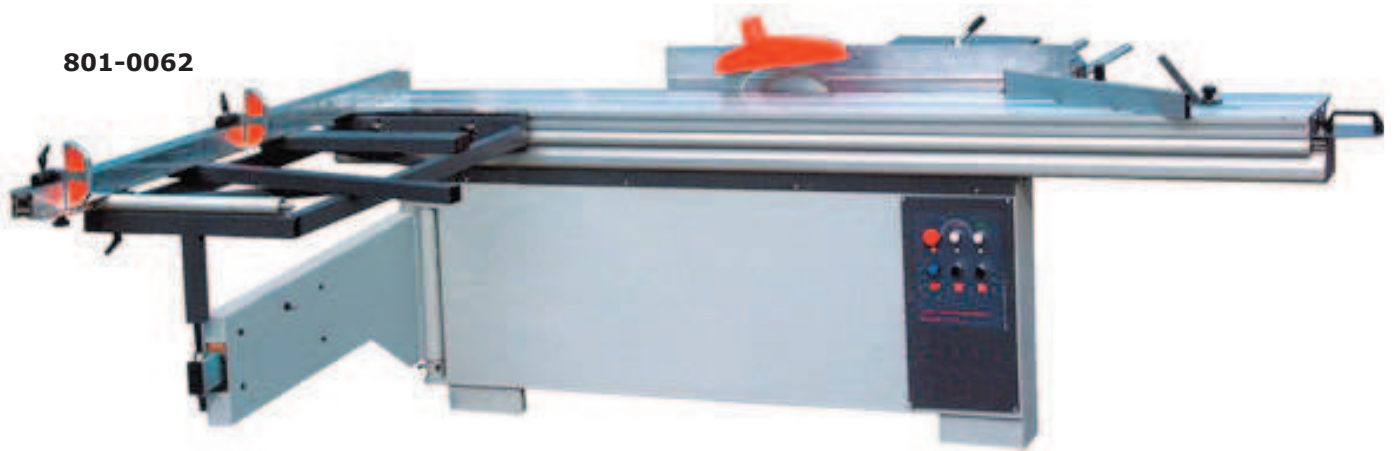
Order No.	801-0050	801-0051
Sliding table structure	Steel Bar	Ball Bearing
Dimension sliding table	2800x310mm	3000x310mm
Cross cut capacity	2800mm	3000mm
Width of cut between saw blade and rip fence	1250mm	1250mm
Saw blade diameter	300mm(250-350)	300mm(250-350)
Height of cut ø300mm	80mm	80mm
Speed of spindle	4500/6000rpm	4500/6000rpm
Spindle diameter	30mm	30mm
Tiling saw blade	90°	90°
Main motor	4kw	4kw
Scoring saw blade	120mm	120mm
Speed of scoring saw	8000rpm	8000rpm
Spindle of scoring saw	20mm	20mm
Overall dimension	280x255x90cm	300x255x90cm

PANEL SAW

* Fit for processing various density boards, shaving boards, woo-based panels, ABS panels, PVC panels, organic glass plates and solid wood and others with wood structure and similar hardness.

* Table surface oxidation treatment, beautiful and hardwearing.

801-0062



801-0064

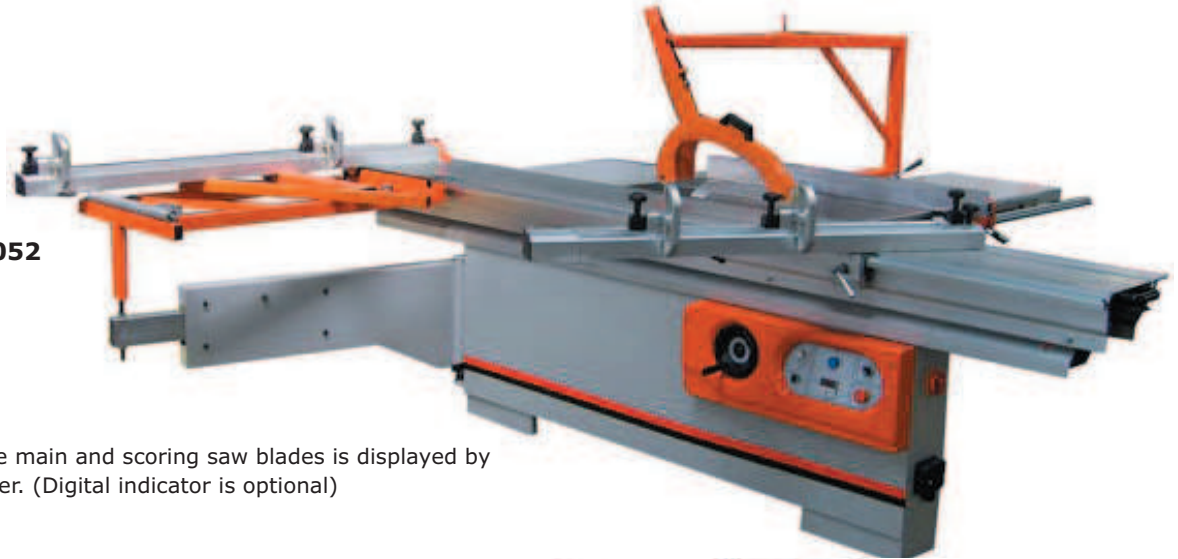


**Ball Bearing structure
Sliding Table**

Order No.	801-0062	801-0064
Sliding table structure	Ball Bearing	Ball Bearing
Dimension sliding table	2800x310mm	1500x310mm
Cross cut capacity	2800mm	1500mm
Width of cut between saw blade and rip fence	900mm	900mm
Saw blade diameter	300mm(250-300)	300mm(250-300)
Height of cut ø300mm	70mm	70mm
Speed of spindle	4500/6000rpm	6000rpm
Spindle diameter	30mm	30mm
Tiling saw blade	90°	90°
Main motor	3kw	3kw
Scoring saw blade	120mm	120mm
Speed of scoring saw	8000rpm	8000rpm
Spindle of scoring saw	20mm	20mm
Overall dimension	280x255x90cm	150x245x900cm

PANEL SAW

801-0052



Tilting angle of the main and scoring saw blades is displayed by precision inclinometer. (Digital indicator is optional)

801-0054



Moving of the main and scoring saw blades is electrical controlled and displayed by digital indicator.

Order No.	801-0052	801-0054
Sliding table structure	Steel bar	Steel bar
Dimension sliding table	3200x370mm	3200x370mm
Cross cut capacity	3200mm	3200mm
Width of cut between saw blade and rip fence	1250mm	1250mm
Saw blade diameter	300mm(250-300)	300mm(250-350)
Height of cut ø300mm	70mm	70mm
Height of cut ø300mm at 45°	55mm	55mm
Speed of main saw	4000/6000rpm	3000/4000/5000rpm
Spindle diameter	30mm	30mm
Tilting of saw blade	0-45°	0-45°
Main motor	4kw	5.5kw
Scoring saw blade	120mm	120mm
Speed of scoring saw blade	8000rpm	9000rpm
Spindle of scoring saw	20mm	20mm
Weight (wooden case)	1150kg	1150kg
Overall dimensions	325x315x90cm	325x315x90cm

PANEL SAW

* Moving of the main and scoring saw blades is electrical controlled and displayed by digital indicator.

801-0055



801-0056



Order No.	801-0055	801-0056
Sliding table structure	Ball Bearing / Steel bar	Steel Bar
Dimension sliding table	3800x360mm / 370mm	3200x370mm
Cross cut capacity	3800mm	3200mm
Width of cut between saw blade and rip fence	1250mm	1250mm
Saw blade diameter	300mm(250-350)	300mm(250-300)
Height of cut ø300mm	80mm	70mm
Height of cut ø300mm at 45°	55mm	55mm
Speed of main saw	4000/6000rpm	4000/6000rpm
Spindle diameter	30mm	30mm
Tilting of saw blade	0-45°	0-45°
Main motor	5.5kw	4kw
Scoring saw blade	120mm	120mm
Speed of scoring saw blade	8000rpm	8000rpm
Spindle of scoring saw	20mm	20mm
Weight (wooden case)	1280kg	1150kg
Overall dimensions	380x315x90cm	325x315x90cm

PANEL SAW

●**801-0057**: Moving of the main and scoring saw blades is electrical controlled and displayed by digital indicator.



801-0053
801-0059
801-0060
801-0061

Order No.	801-0053	801-0057	801-0059	801-0060	801-0061
Sliding table structure	Ball bearing				
Dimension sliding table	3200x360mm	3200x370mm	2800x360mm	3800x360mm	3000x360mm
Cross cut capacity	3200mm	3200mm	2800mm	3800mm	3000mm
Width of cut between saw blade and rip fence	1250mm				
Saw blade diameter	300mm(250-300)				
Height of cut ø300mm	70mm				
Height of cut ø300mm at 45°	55mm				
Speed of main saw	4000/6000rpm				
Spindle diameter	30mm				
Tilting of saw blade	0-45°				
Main motor	4kw				
Scoring saw blade	120mm				
Speed of scoring saw	8000rpm				
Spindle of scoring saw	20mm				
Weight (wooden case)	1150kg	1150kg	1000kg	1250kg	1050kg
Overall dimensions (cm)	325x315x90	325x315x90	280x315x90	380x315x90	305x315x90

PANEL SAW

- * Tilting angle of the main and scoring saw blade is displayed by precision incliometer.
- * Digital indicator is optional.

Technical Data:

Sliding table structure: Steel bar
 Dimension sliding table: 3200x370mm
 Cross cut capacity: 3200mm
 Width of cut between saw blade and rip fence: 1250mm
 Saw blade diameter: 300-400mm
 Height of cut ø300mm: 70-80mm
 Height of cut ø300mm at 45°: 55mm
 Speed of main saw: 4000/6000rpm
 Spindle diameter: 30mm
 Tilting of saw blade: 0-45°
 Main motor: 4kw
 Scoring saw blade: 120mm
 Speed of scoring saw: 8000rpm
 Spindle of scoring saw: 20mm
 Weight (wooden case): 1150kg
 Overall dimensions: 325x315x90cm

Order No. 801-0058



PANEL SAW

- **801-0063:** Tilting angle of the main and scoring saw blade is displayed by precision incliometer. (Digital indicator is optional)



Order No.	801-0063	801-0065
Sliding table structure	Ball Bearing	
Dimension sliding table	1600x360mm	1300x360mm
Cross cut capacity	1600mm	1300mm
Cutting Width between saw blade and rip fence	900mm	
Saw blade diameter	300mm(250-350)	
Height of cut ø300mm	70mm	
Speed of main saw	4000/6000rpm	6000rpm
Spindle diameter	30mm	
Tilting of saw blade	45°	
Main motor	3kw	
Scoring saw blade	120mm	
Speed of scoring saw	8000rpm	
Spindle of scoring saw	20mm	
Weight (wooden case)	1000kg	800kg
Overall dimensions	160x245x90cm	130x245x90cm

BAND SAW



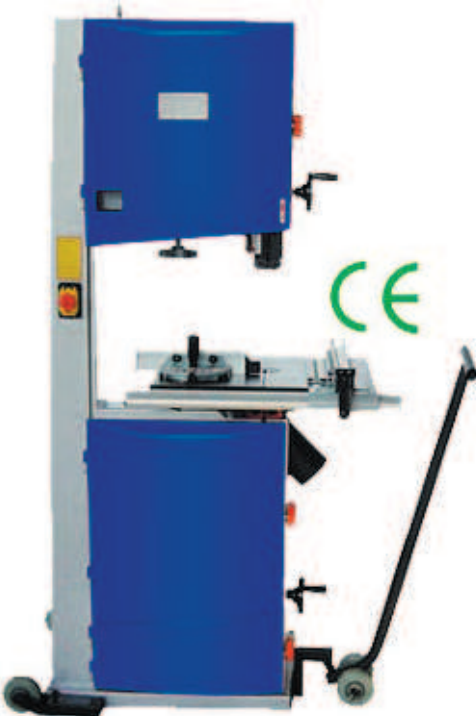
With Quick Clamping

Order No.	801-0001	801-0002	801-0003	801-0004
Motor Power	1HP	1HP	1.5HP	1.5HP
Saw Wheel Diameter	315mm	315mm	350mm	350mm
Motor speed	1400rpm	1400rpm	1400rpm	1400rpm
Table Pivot Capacity	0-45°	0-45°	0-45°	0-45°
Max Height	160mm	160mm	160mm	200mm
Max Width	300mm	305mm	335mm	335mm
Length of Saw Blade	2240mm	2240mm	2400mm	2490mm
Liner Speed of Saw Blade	12.6m/s	12.6m/s	12;10m/s	12;10m/s
Table Size	400x500mm	400x500mm	400x500mm	400x500mm
Dust Extraction Outlet	100mm	100mm	100mm	100mm
Gross Weight/Net Weight	83kg/77kg	83kg/77kg	92/85kg	92kg/85kg
Shipping Size	110x50x42cm	110x50x42cm	123x50x42cm	127x52x44cm
Qty per 20FT/40FT container	110pcs/230pcs	110pcs/230pcs	95pcs/200pcs	95pcs/200pcs

Band Saws



Order No.	801-0005
Motor Power	2HP
Saw Wheel Diameter	355mm
Motor speed	1400rpm
Table Pivot Capacity	0-45°
Max Height	235mm
Max Width	345mm
Length of Saw Blade	2750mm
Liner Speed of Saw Blade	12;10m/s
Table Size	535×435mm
Dust Extraction Outlet	100mm
Gross Weight/Net Weight	96kg/90kg
Shipping Size	140x58x45cm
Stand weight	20kg/75kg
Stand Shipping Size	65x48x26cm
Qty per 20FT/40FT container	66pcs/132pcs



Band Saws

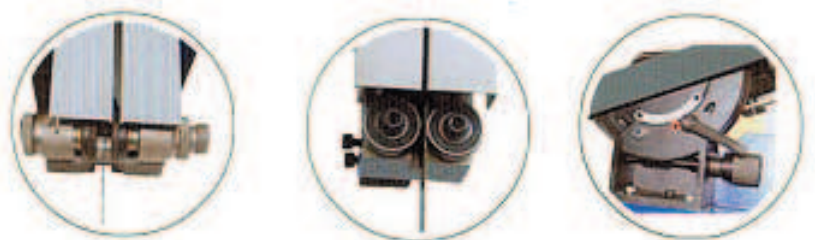
Order No.	801-0006	801-0007
Motor Power	2.2KW	3HP
Motor	230V, 50Hz, 1400rpm	
Saw Wheel Diameter	420mm	470mm
Table Pivot Capacity	-10°~45°	-10°~45°
Max Height	250mm	280mm
Max Width	410mm	465mm
Length of Saw Blade	3345mm	3607mm
Liner Speed of Saw Blade	14;7m/s	14;7m/s
Table Size	435x535mm	630x480mm
Dust Extraction Outlet	100mm	100mm
Gross Weight/Net Weight	140kg/126kg	180kg/162kg
Shipping Size	72x53x190mm	83x55x205cm
Qty per 20FT/40FT container	35pcs/70pcs	28/56pcs

BAND SAW



Order No.	801-0008
Motor Power	1/2HP
Saw Wheel Diameter	254mm
Motor speed	1400rpm
Table Pivot Capacity	0-20°
Max Height	100mm
Max Width	245mm
Length of Saw Blade	1750mm
Liner Speed of Saw Blade	13m/s or 15.6m/s
Table Size	350×330mm
Dust Extraction Outlet	60mm
Gross Weight/Net Weight	38kg/35kg
Shipping Size	83x32x44cm
Qty per 20FT/40FT container	237pcs/482pcs

Heave Duty Band Saws



Order No.	801-0009	801-0010	801-0011
Motor Power	3.5KW	4KW	4KW
Motor	380V, 50Hz, 1400rpm		
Saw Wheel Diameter	510mm	610mm	710mm
Table Pivot Capacity	0-45°	0-45°	0-45°
Max Height	350mm	430mm	430mm
Max Width	500mm	600mm	700mm
Length of Saw Blade	4100mm	4590mm	5020mm
Liner Speed of Saw Blade	22m/s	26m/s	26m/s
Table Size	640×500mm	700×610mm	1000×700mm
Dust Extraction Outlet	100mm	100mm	100mm
Gross Weight/Net Weight		310kg/280kg	365kg/330kg
Shipping Size		93x73x214cm	103x73x222cm
Qty per 20FT/40FT container		18/36pcs	15pcs/33pcs

TABLE SAW



801-0020



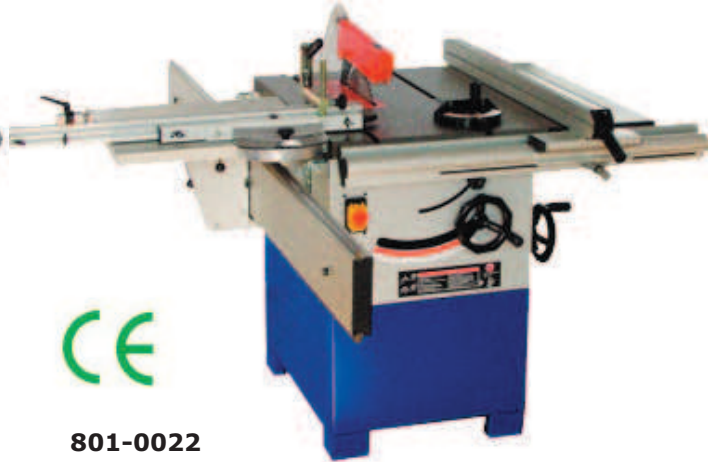
801-0023
801-0026



Order No.	801-0020	801-0023	801-0026
Saw blade bore dia.	25.4/30mm	16mm	25.4mm
Saw blade diameter	254mm	254mm	305mm
Main table size	800×600mm	686×508mm	800×578mm
Extension table(2pcs)	800×305mm	686×305mm	800×305mm
Motor power	3HP	3HP	3HP
Max. depth of cut at 0°	75mm	85mm	105mm
Max. depth of cut at 45°	60mm	57mm	74mm
Dust extraction outlet	100mm	50mm	50mm



801-0021



801-0022

Order No.	801-0021	801-0022
Saw blade bore dia.	25.4/30mm	25.4/30mm
Saw blade diameter	254mm	254mm
Main table size	800×600mm	800×560mm
Extension table	800×305mm	800×305mm
Sliding table size	500×600mm	500×480mm
Max. timber width	630mm	630mm
Max. timber length	1220mm	1300mm
Motor power	3HP	3HP
Max. depth of cut at 0°	75mm	75mm
Max. depth of cut at 45°	60mm	60mm
Dust extraction outlet	100mm	100mm

TABLE SAW

CE

801-0024



801-0025



Order No.	801-0024	801-0025
Saw blade bore dia.	25.4/30mm	30mm
Saw blade diameter	254mm	315mm
Main table size	800×560mm	800×600mm
Extension table	800×305mm	800×440mm
Rip extension table size	600×530mm	600×530mm
Sliding table size	500×400mm	600×480mm
Max. timber width	630mm	1220mm
Max. timber length	1300mm	1300mm
Motor power	3HP	4HP
Max. depth of cut at 0°	75mm	100mm
Max. depth of cut at 45°	60mm	75mm
Dust extraction outlet	100mm	100mm

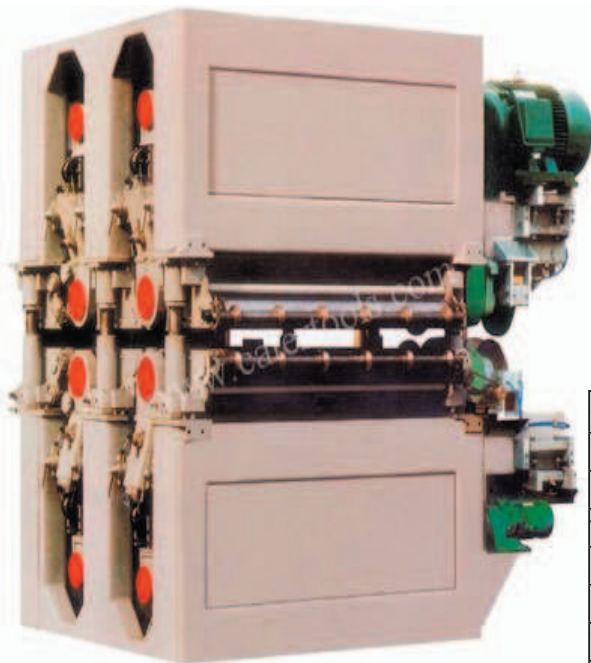
DOUBLE SURFACE SANDER



This machine is a double-belt two surface sander, it is used for shaving board, wooden board, MDF, veneer board, high pressure board, cement board, solid board. Equipped with calibrating sanding unit and fine sanding unit. This machine has two combined sanding unit, it is not only can be used to polish by giving thickness, but also can be used to fine sanding with the sanding pad. Therefore, the surface qualification of the board is in high degree. The polishing roller of this machine is transacted strictly, dynamically balanced precisely. This can ensure the roller can be used for a long time. The surface of the roller have large spiral groove , reduce the interface ,add pressure, emit heat. This machine has more adjusting unit. Through adjustment, the two surface of the board can be polished with equal data and in high precision. It can remain the precision through compensate mode. The system of feeding adopt stepless speed regulation, it can improve producing efficiency on the basis of the required precision.

Order No.	800-0330	800-0331
Width of sanded panel	60-1300mm	60-1300mm
Min.panellength	550mm	700mm
Thickness of sanded panel	5-150mm	5-150mm
Speed abrasive belt	19.5m/s	19.5m/s
Motor power	163.24KW	163.24kw
Working air pressure	0.6-0.8Mpa	0.6-0.8Mpa
Cosumption of compressed air	2m ³ /min	2m ³ /min
Size of abrasive belt	1330x2620mm	1330x2620mm
Overall dimensions	1950x3600x3210mm	2100x3600x3210mm
Weight	about 11T	about 11T

DOUBLE SURFACE SANDER



This machine is a double-belt two surface sander, it is used for shaving board, wooden board, MDF, veneer board, high pressure board, cement board, solid board. Equipped with calibrating sanding unit and fine sanding unit.

This machine has two combined sanding unit, it is not only can be used to polish by giving thickness, but also can be used to fine sanding with the sanding pad. Therefore, the surface qualification of the board is in high degree.

The polishing roller of this machine is transacted strictly, dynamically balanced precisely. This can ensure the roller can be used for a long time. The surface of the roller have large spiral groove , reduce the interface ,add pressure, emit heat. This machine has more adjusting unit. Through adjustment, the two surface of the board can be polished with equal data and in high precision. It can remain the precision through compensate mode. The system of feeding adopt stepless speed regulation, it can improve producing efficiency on the basis of the required precision

Order No.	800-0332	800-0333
Width of sanded panel	60-1300mm	60-1300mm
Min.panellength	610mm	700mm
Thickness of sanded panel	5-150mm	5-150mm
Speed abrasive belt	19.5m/s	19.5m/s
Motor power	273.24kw	273.24kw
Working air pressure	0.6-0.8Mpa	0.6-0.8Mpa
Cosumption of compressed air	2m ³ /min	2m ³ /min
Size of abrasive belt	1330x2620mm	1330x2620mm
Overall dimensions	2910x3600x3210mm	2910x3600x3210mm
Weight	about 20T	about 20T

SEGMENTED PAD SANDER



- .Can polish flat board and uneven board, maximum difference is 1.8mm
- .Imported photoelectric switch
- .Imported Micro-computer table height control
- .Automatic brake for belt breakage, miss trace and power failure
- .Imported Italy conveyor belt
- .New type of press roller and press board, effectively improving the polishing precision
- .Air jet belt cleaning device
- .Rotating brush to clean the board
- .Feeding speed is controlled by inverter
- .Tape strap wheel are easily dismountable and stable performance
- .Electronic sectional pad
- .Second sanding belt with two speed, not only normal polishing but also laquer polishing
- .Infeed table and outfeed table

Order No.	800-0334
Width of sanded panel	40-1300mm
Thickness of sanded panel	3-150mm
Speed of conveyor belt	Max 16m/min
Speed of abrasive belt on 1st unit	18m/s
Speed of abrasive belt on 2nd unit	8m/s , 16m/s
Size of abrasive belt	1380*2620mm
Total motor power	40kw
First belt motor	22kw-2p
Second belt motor	15kw-2p
Feeding motor	2.2kw-4p
Rise and decline motor	0.25kw
Brush motor	0.37kw
Working pressure	0.4-0.8Mpa
Consumption of compressed air	1.5m ³ /min
Overall dimensions	2750x1972x2250mm
Weight	3100kg

ROLLER CONVEYOR

The integral frame is used for the machine body with high rigidity to improve the service life of the machine. The rollers have been balanced in dynamic precisely, which leads to stable sanding precision and good sanding performance. Use the frequency-controlled drive to feed, this can improve the productive efficiency. The thickness of sanded board is determined by light grids rule to improve the sanding precision.



Order No.	800-0335
Width of sanded panel	40-1300mm
Thickness of sanded panel	2.5-110mm
Size Of Abrasive Belt	1330×2620mm
Feeding speed	8~75m/min
Main motor	37.30KW
Feeding motor	4KW
Working pressure	0.55Mpa
Speed of sucked air	25~30m/s
Consumption of sucked air	12000m ³ /h
Overall dimensions	2545×2820×2400mm
Weight	9000Kg

SINGLE-BELT LACQUER SANDER

This machine is a new developed lacquered panel sander which take advanced technology from abroad. The polishing roller adopt soft material is dynamically balanced precisely. The belt speed is controlled by frequency inverter, providing wide range of belt speed to match the variety of different paints. The conveyor belt speed is controlled by a variable speed unit, Feed speed can be varied as desired to suit all types of work-piece material, assuring superior sanding quality. The brush roller built at out feed end of the machine can clean powder on the sanded panel. The air jet cleaner place at the top of the belt can clean dust. the conveyor table height adjustment to thickness by means of micro-accurate setting of work digital read-out, data entered via the keyboard easily that enable rapid and accurate setting of work piece thickness. This machine is one of the necessary equipment for manufacturing furniture?bamboo floor and wood floor.



Order No.	800-0336	800-0337
Width of sanded panel	600mm	600mm
Thickness of sanded panel	2.5-110mm	2.5-110mm
Feeding speed	5~21m/min	5~21m/min
Speed of abrasive belt	Max 10m/sec	Max 10m/sec
Size of abrasive belt	635x1470mm	635x1470mm
Overall dimensions	1500x1080x1700mm	1300x1080x1700mm
Total motor power	50HZ 8.09KW	50HZ 6.8KW
Main motor	5.5KW-4P	5.5KW-4P
Wheel motor	1.1KW-6p	/
Feeding motor	0.75KW	0.75KW
Lifting & lowering motor	0.37KW	0.37KW
Brush motor	0.37KW	0.18KW
Working pressure	0.4~0.8Mpa	0.4~0.8Mpa
Consumption of compressed air	0.5m ³ /min	0.5m ³ /min
Weight	900Kg	850kg

SINGLE BELT SANDER

This machine is a double-belt sander which take advanced technology from abroad. The max. sanding width is 1000mm. Equipped automatic. thickness adjustment unit and electronic control unit. This machine index is advanced and it,s in high precision, reasonable composition. modern construction and convenient operation, It has the world advanced level. This machine is one of the necessary equipment for manufacturing fibreboard, shaving board, piywood and panel-type furniture.



Order No	800-0338
Width of sanded panel	40-630mm
Thickness of sanded panel	2.5-160mm
Speed of abrasive belt	20m/s
Size of abrasive belt	660*1900mm
Speed of conveyor belt	6-24m/min
Total motor power	17.24kw
Working pressure	0.4-0.8Mpa
Consumption of compressed air	0.5m ³ /min
Average speed of sucked air	25-30m/s
Overall dimensions	1670x1310x1940mm
N. W.	1250kg

Wide Double-belt Sander

This machine is a double-belt sander which take advanced technology from abroad. The max. sanding width is 1000mm. Equipped automatic. thickness adjustment unit and electronic control unit. This machine index is advanced and it,s in high precision, reasonable composition. modern construction and convenient operation, It has the world advanced level. This machine is one of the necessary equipment for manufacturing fibreboard, shaving board, piywood and panel-type furniture.



Order No.	800-0339	800-0340	800-0341
Width of sanded panel	40~630mm	40~630mm	40~630mm
Thchness of sanded panel	2.5-160mm	2.5-160mm	2.5-160mm
Speed of avrasive belt on 1st unit	20m/s	20m/s	20m/s
Speed of avrasive belt on 2nd unit	16m/s	16m/s	14m/s
Speed of conveyor belt	6~24m/min	6~24m/min	6~24m/min
Size of abrasive belt	660x1900mm	660x1900mm	660x1900mm
Total motor power	24.74KW	24.74KW	24.74KW
First motor	15KW	15KW	15KW
Second motor	7.5KW	7.5KW	7.5KW
Feeding motor	1.5KW	1.5KW	1.5KW
Lifting & lowering motor	0.37KW	0.37KW	0.37KW
Brush motor	0.37KW	0.37KW	0.37KW
Working pressure	0.4~0.8Mpa	0.4~0.8Mpa	0.4~0.8Mpa
Consumption of compressed air	0.5m ³ /min	0.5m ³ /min	0.5m ³ /min
Average speed of sucked air	25~30m/s	25~30m/s	25~30m/s
Overall dimensions	1670x1310x1940mm	1670x1310x1940mm	1670x1310x1940mm
N.W.	2050Kg	2050Kg	2050Kg

SINGLE BELT SANDER WITH WATER

This machine is a double-belt sander which take advanced technology from abroad. The max. sanding width is 1000mm. Equipped automatic. thickness adjustment unit and electronic control unit. This machine index is advanced and it,s in high precision, reasonable composition,modern construction and convenient operation, It has the world advanced level. This machine is one of the necessary equipment for manufacturing fibreboard, shaving board,plwood and panel-type furniture.



Order No.	800-0342	800-0343
Width of sanded panel	40~1000mm	40~1000mm
Thchness of sanded panel	2-100mm	2.5~100mm
Speed of avrasive belt on 1st unit	19.5m/s	19.5m/s
Speed of conveyor belt	6-30m/min	6-30m/min
Size of abrasive belt	1030x2200mm	1030x2200mm
Total motor power	24.94KW	24.77KW
Main motor	22KW	22KW
Feeding motor	2.2KW	2.2KW
Lifting & lowering motor	0.37KW	0.37KW
Water pump motor	/	0.2KW
Brush motor	0.37KW	/
Working pressure	0.4~0.8Mpa	0.4~0.8Mpa
Consumption of compressed air	0.5m ³ /min	0.5m ³ /min
Average speed of sucked air	25~30m/s	25~30m/s
Overall dimensions	1700x1650x2220mm	1700x1650x2220mm
N.W.	2200Kg	2200Kg

WIDE DOUBLE-BELT SANDER

This machine is a double-belt sander which take advanced technology from abroad. The max. sanding width is 1000mm. Equipped automatic. thickness adjustment unit and electronic control unit. This machine index is advanced and it,s in high precision, reasonable composition,modern construction and convenient operation, It has the world advanced level. This machine is one of the necessary equipment for manufacturing fibreboard, shaving board,plwood and panel-type furniture.



Order NO.	800-0344	800-0345
Width of sanded panel	40~1000mm	40~1000mm
Thchness of sanded panel	2.5-100mm	2.5-100mm
Speed of avrasive belt on 1st unit	20m/s	19.5m/s
Speed of avrasive belt on 2nd unit	16m/s	14m/s
Speed of conveyor belt	6~30m/min	6~30m/min
Size of abrasive belt	1030x2200mm	1030x2200mm
Total motor power	39.94KW	35.94KW
First motor	22KW	22kw
Second motor	15KW	11kw
Feeding motor	2.2KW	2.2kw
Lifting motor	0.37KW	0.37kw
Brushing motor	0.37KW	0.37kw
Working pressure	0.4~0.8Mpa	0.4~0.8Mpa
Consumption of compressed air	0.5m ³ /min	0.5m ³ /min
Average speed of sucked air	25~30m/s	25~30m/s
Overall dimensions	1970x1650x2220mm	1970x1650x2220mm
N.W.	2600Kg	2500Kg

WIDE DOUBLE-BELT SANDER



Order NO.	800-0346
Width of sanded panel	40-1000mm
Thickness of sanded panel	2.5-100mm
Speed of abrasive belt on 1st unit	19.5m/s
Speed of abrasive belt on 2nd unit	15m/s
Speed of conveyor belt	7-38m/min
Size of abrasive belt	1030x2200mm
Total motor power	56.74kw
Working pressure	0.4-0.8Mpa
Consumption of compressed air	0.5m ³ /min
Average speed of sucked air	25-30m/s
Overall dimensions	2390x2310x2060mm
N.W.	3000kg

SINGLE BELT SANDER

This machine can be used to polish various board by giving thickness and it suits to polish solid board, veneer board, shaving board, middle-density fibrous board etc. This machine index is advanced and it is in high precision, reasonable composition, modern construction and convenient operation. It has the world advance level.



Order NO.	800-0347
Width of sanded panel	40~1300mm
Thickness of sanded panel	2.5~150mm
Speed of avrasive belt	20m/s
Speed of conveyor belt	7~25m/min
Size of abrasive belt	1330x2200mm
Total motor power	39.94KW
Main motor	37KW-4p
Feeding motor	2.2KW~6P
Lifting motor	0.37KW
Brushing motor	0.37KW
Working pressure	0.4~0.8Mpa
Consumption of compressed air	0.5m ³ /min
Average speed of sucked air	25~30m/s
Overall dimensions	2070x2600x2200mm
N.W.	2800kg

SINGLE-BELT LAQUER SANDER

This series sander mainly used to polish furniture surface paint, including door, window etc. and they are also used to fine sanding various board, such as solid board, veneer board, shaving board etc. in order to meet the sanding requirement, we can supply contact roller with soft rubber in various shore hardness, aim at various kinds and characters of coating.



Order NO.	800-0348	800-0349
Width of sanded panel	40-1300mm	40-1000mm
Thickness of sanded panel	2.5-160mm	2.5-160mm
Speed Of Abrasive Belt	<9.5m/sec	<9.5m/sec
Speed Of Conveyor Belt	6-30m/min	6-30m/min
Size Of Abrasive Belt	1330x1900mm	1030x1900mm
Total Motor Power	25.44KW	17.94kw
Working pressure	0.4~0.8Mpa	0.4-0.8Mpa
Consumption of compressed air	0.5m ³ /min	0.5m ³ /min
Overall dimensions	2425x2005x2070mm	2325x1705x2070mm
Weight	2100kg	1950kg

SINGLE BELT SANDER WITH WATER

- .This machine with water cooling device, specially designed for polishing steel, stainless steel, man-made stone, etc.
- .Water circulation device can provide enough cooling water, which can get the best polishing result and prolong sanding belt use life
- .Waste filter system can ensure cooling water repeatedly usement, which can save water
- .Sponge wheel on the outfeed, which can absorb water on the panel surface effectively
- .Raster scale measure workpiece thickness, precision is 0.01mm
- .Special structure of the feeding table, which can cleanup the bottom of the conveyor belt completely
- .Sanding belt cleaning device
- .Double pressure roller make the panel more stably



Order NO.	800-0350
Width of sanded panel	40-1300mm
Thickness of sanded panel	1-100mm
Speed of abrasive belt	18.5m/s
Speed of conveyor belt	2.5-12m/min
Size of abrasive belt	1330x1900mm
Total motor power	34.75kw
Working pressure	0.4-0.8Mpa
Consumption of compressed air	0.5m ³ /min
Average speed of sucked air	25-30m/s
Overall dimensions	2520x2300x2535mm
N.W.	2600kg

WIDE DOUBLE-BELT SANDER

This machine can be used to polish various board by giving thickness and it suits to polish solid board, veneer board, shaving board, middle-density fibrous board etc. This machine index is advanced and it is in high precision, reasonable composition, modern construction and convenient operation. It has the world advance level.



Order No.	800-0351
Width of sanded panel	40~1300mm
Thickness of sanded panel	2.5~100mm
Speed of avrasive belt on 1st unit	19.5m/s
Speed of avrasive belt on 2nd unit	14m/s
Speed of conveyor belt	6~30m/min
Size of abrasive belt	1330x2200mm
Total motor power	35.94KW
First motor	22KW-2p
Second motor	11KW-2p
Feeding motor	2.2KW~4P
Lifting & lowering motor	0.37KW
Brush motor	0.37KW
Working pressure	0.4~0.8Mpa
Consumption of compressed air	0.5m ³ /min
Average speed of sucked air	25~30m/s
Overall dimensions	1970x1950x2220mm
N.W.	3000kg

DOUBLE-BELT SANDER

This machine can be used to polish various boards by giving thickness and it suits to polish solid board, veneer board, veneer board, shaving board, middle-density fibrous board etc.



Order No.	800-0352
Width of sanded panel	40-1300mm
Thickness of sanded panel	2.5-150mm
Speed of abrasive belt on 1st unit	19.5m/s
Speed of abrasive belt on 2nd unit	15m/s
Feeding speed	7-38m/min
Size of abrasive belt	1330x2200mm
Total motor power	49.74kw
Working pressure	0.4-0.8mpa
Consumption of compressed air	0.5m ³ /min
Average speed of sucked air	25-30m/s
Overall dimensions	2170x2600x2200mm
Weight	About 3600kg

TRIPLE-HEAD WIDE-BELT SANDER

This machine can be used to polish various board by giving thickness and it suits to polish solid board, veneer board, shaving board, middle-density fibrous board etc. This machine index is advanced and it is in high precision, reasonable composition, modern construction and convenient operation. It has the world advance level.



Order NO.	800-0355
Width of sanded panel	40~1300mm
Thickness of sanded panel	2.5~150mm
Speed of avrasive belt on 1st unit	19.5m/s
Speed of avrasive belt on 2nd unit	19.5m/s
Speed of avrasive belt on 3rd unit	16m/s
Speed of conveyor belt	7~25m/min
Size of abrasive belt	1330x2200mm
Total motor power	91.90KW
First motor	37KW
Second motor	30KW
Third motor	22KW
Feeding motor	2.2KW~6P
Lifting & lowering motor	0.37KW
Brush motor	0.37KW
Working pressure	0.4~0.8Mpa
Consumption of compressed air	0.5m ³ /min
Average speed of sucked air	25~30m/s
Overall dimensions	2600x2600x2200mm
N.W.	4800kg

CHAIR SANDING MACHINE

This machine is special designed for finish sanding uneven boards, especially for chair legs and chair backrest. Import inverter control the feeding speed. Import inverter control the sanding speed. Press rollers are controlled by compressed air.



Order NO.	800-0356
Working width	260mm
Work piece thickness	5-100mm
Working arc	R> 130mm
Work piece length	≥300mm
Speed of abrasive belt	<8m/s
Feeding speed	Max 50r/min
Working height	900±20mm
Total motor power	2.57kw
Working pressure	0.4-0.8Mpa
Overall dimensions	1200x700x1400mm
Weight	400kg

TRIPLE-HEAD WIDE-BELT SANDER

This machine can be used to polish various board by giving thickness and it suits to polish solid board, veneer board, shaving board, middle-density fibrous board etc. This machine index is advanced and it is in high precision, reasonable composition, modern construction and convenient operation. It has the world advance level.



Order No.	800-0353
Width of sanded panel	40~1300mm
Thickness of sanded panel	2.5~150mm
Speed of abrasive belt on 1st unit	19.5m/s
Speed of abrasive belt on 2nd unit	19.5m/s
Speed of abrasive belt on 3rd unit	14m/s
Speed of conveyor belt	7~25m/min
Size of abrasive belt	1330x2200mm
Total motor power	91.90KW
First motor	37KW
Second motor	30KW
Third motor	22KW
Feeding motor	2.2KW~6P
Lifting & lowering motor	0.37KW
Brush motor	0.37KW
Working pressure	0.4~0.8Mpa
Consumption of compressed air	0.5m ³ /min
Average speed of sucked air	25~30m/s
Overall dimensions	2600x2600x2200mm
N.W.	4800kg

WIDE DOUBLE-BELT SANDER

This machine can be used to polish various board by giving thickness and it suits to polish solid board, veneer board, shaving board, middle-density fibrous board etc. This machine index is advanced and it is in high precision, reasonable composition, modern construction and convenient operation. It has the world advance level.



Order NO.	800-0354
Width of sanded panel	40~1300mm
Thickness of sanded panel	2.5-150mm
Speed of abrasive belt on 1st unit	19.5m/s
Speed of abrasive belt on 2nd unit	15m/s
Speed of conveyor belt	7~38m/min
Size of abrasive belt	1330x2200mm
Total motor power	56.74KW
First motor	30KW-2p
Second motor	22KW-4p
Feeding motor	4KW~4P
Lifting & lowering motor	0.37KW
Brush motor	0.37KW
Working pressure	0.4~0.8Mpa
Consumption of compressed air	0.5m ³ /min
Average speed of sucked air	25~30m/s
Overall dimensions	2170x2600x2200mm
N.W.	4000kg

WIDE DOUBLE-BELT SANDER

This machine is a new developed double-head sander which take advanced technology from abroad. The first head is iron roll which use high quality alloy, dynamic balance strictly. It can be easily adjusted up and down through Lack of impartiality device. The second head is roll and pad reunite structure. The roller is soft rubber roller(also may be changed to hard rubber roller or iron roller). The air sanding pad can be easily adjusted up and down through Lack of impartiality device. It is mainly used to polish manufacturing fiberboard, solid board by give thickness



Order No.	800-0359	800-0360
Width of sanded panel	40-1300mm	40-1300mm
Thickness of sanded panel	2.5-100mm	2.5-130mm
Feeding speed	Max 24m/min	Max 24m/min
Speed of first abrasive belt	19.5m/sec	20m/sec
Speed of third abrasive belt	16m/sec	16m/sec
Size of abrasive belt	1330x2200mm	1330x1900mm
Total motor power	58.24KW	43.24kw
First motor	30kw	22kw
Second motor	22kw	15kw
Feeding motor	5.5kw(hydraulic pressure motor)	5.5kw(hydraulic pressure motor)
Lifting & lowering motor	0.37kw	0.37kw
Brush motor	0.37kw	0.37kw
Working pressure	0.4~0.8Mpa	0.4~0.8Mpa
Consumption of compressed air	0.5m ³ /min	0.5m ³ /min
Overall dimensions	2212x2102x2220mm	2160x2000x2100mm
Weight	about 4000Kg	3600Kg

SPECIAL CURVE SURFACE SANDER

Compact Finishing Sander at a Compact Price
 Hexagonal shafts for direct power transfer
 Removable shafts for quicker tool change
 For finish sanding of louver-shutters- raised panel doors-frames
 For sanding finishing of Hard wood-Softwood-MDF-Veneer-Plywood
 All speeds adjustable
 Conveyor belt as wide-wide with vacuum-dual adjustable

Order No.	800-0361
Height max of workpiece	150mm
Width max of workpiece	800mm
Length	infinite
Throughfeed	2-12m/min
Rotation speed	2-12RPM
Spindle speed	350-1150RPM
Number of spindles	4
Diameter of tools max	440mm
Total motor power	13.5kw
Main motor	1.5kw(2 pieces)
Rotation motor	1.1kw
Conveyor motor	1.5kw
Lifting & lowering motor	0.37kw
Vacuum pump for RO 1 Vac	7.5kw
Dust collection duct	4xdia.150mm
Exhaust capacity	2000cubm/h
Dimensions	2050x1600x2120mm
Net weight	appr.1800kg



TRIPLE-HEAD WIDE BELT SANDER

This machine is a new developed triple-head sander which take advanced technology from abroad. The first and second roller can adjust in order to sand different material panel. The third sanding pad can be used to fine sanding. This machine adopt new style of swing belt, the belt swing is more convenient.the conveyor table height adjustment to thickness by means of micro-computer control with digital read-out, data entered via the keyboard easily that enable rapid and accurate setting of work piece and convenient operation. This machine is one of the necessary equipment for manufacturing furniture?bamboo floor and wood floor.



Order No.	800-0357
Width of sanded panel	40-600mm
Thckness of sanded panel	2.5-120mm
Feeding speed	Max 24m/min
Speed of first avrasive belt	20m/sec
Speed of second avrasive belt	20m/sec
Speed of third avrasive belt	15m/sec
Size of abrasive belt	630x1900mm
Total motor power	50.74KW
First belt motor	18.5KW~2P
Middle belt motor	15KW~4P
Third belt motor	11KW~2P
Feeding motor	5.5KW
Lifting & lowering motor	0.37KW
Brush motor	0.37KW
Working pressure	0.4~0.8Mpa
Consumption of compressed air	0.5m ³ /min
Overall dimensions	2530x1355x1960mm
Weight	about 3500kg

TRIPLE-HEAD WIDE BELT SANDER

This machine is a new developed triple-head sander which take advanced technology from abroad. It is mainly used to polish solid wood floor by give thickness and fine sanding for shutter.



Order No.	800-0358
Width of sanded panel	40-900mm
Thckness of sanded panel	2.5-120mm
Feeding speed	Max 24m/min
Speed of first avrasive belt	20m/sec
Speed of second avrasive belt	20m/sec
Speed of third avrasive belt	15m/sec
Size of abrasive belt	930x1900mm
Total motor power	61.74KW
First belt motor	22KW-2p
Middle belt motor	18.5KW-4P
Third belt motor	15KW-2P
Feeding motor	5.5KW(hydraulic pressure motor)
Lifting & lowering motor	0.37KW
Brush motor	0.37KW
Working pressure	0.4~0.8Mpa
Consumption of compressed air	0.5m ³ /min
Overall dimensions	2530x1655x1960mm
Weight	about 4000kg

TRIPLE-HEAD WIDE-BELT SANDER

This machine can be used to polish various board by giving thickness and it suits to polish solid board, veneer board, shaving board, middle-density fibrous board etc. This machine index is advanced and it is in high precision, reasonable composition, modern construction and convenient operation. It has the world advance level.



Order NO.	800-0355
Width of sanded panel	40~1300mm
Thickness of sanded panel	2.5~150mm
Speed of avrasive belt on 1st unit	19.5m/s
Speed of avrasive belt on 2nd unit	19.5m/s
Speed of avrasive belt on 3rd unit	16m/s
Speed of conveyor belt	7~25m/min
Size of abrasive belt	1330x2200mm
Total motor power	91.90KW
First motor	37KW
Second motor	30KW
Third motor	22KW
Feeding motor	2.2KW~6P
Lifting & lowering motor	0.37KW
Brush motor	0.37KW
Working pressure	0.4~0.8Mpa
Consumption of compressed air	0.5m ³ /min
Average speed of sucked air	25~30m/s
Overall dimensions	2600x2600x2200mm
N.W.	4800kg

CHAIR SANDING MACHINE

This machine is special designed for finish sanding uneven boards, especially for chair legs and chair backrest. Import inverter control the feeding speed. Import inverter control the sanding speed. Press rollers are controlled by compressed air.



Order NO.	800-0356
Working width	260mm
Work piece thickness	5-100mm
Working arc	R> 130mm
Work piece length	≥300mm
Speed of abrasive belt	<8m/s
Feeding speed	Max 50r/min
Working height	900±20mm
Total motor power	2.57kw
Working pressure	0.4-0.8Mpa
Overall dimensions	1200x700x1400mm
Weight	400kg

WIDE DOUBLE-BELT SANDER

This machine is a new developed double-head sander which take advanced technology from abroad. The first head is iron roll which use high quality alloy, dynamic balance strictly. It can be easily adjusted up and down through Lack of impartiality device. The second head is roll and pad reunite structure. The roller is soft rubber roller(also may be changed to hard rubber roller or iron roller). The air sanding pad can be easily adjusted up and down through Lack of impartiality device. It is mainly used to polish manufacturing fiberboard, solid board by give thickness



Order No.	800-0359	800-0360
Width of sanded panel	40-1300mm	40-1300mm
Thickness of sanded panel	2.5-100mm	2.5-130mm
Feeding speed	Max 24m/min	Max 24m/min
Speed of first abrasive belt	19.5m/sec	20m/sec
Speed of third abrasive belt	16m/sec	16m/sec
Size of abrasive belt	1330x2200mm	1330x1900mm
Total motor power	58.24KW	43.24kw
First motor	30kw	22kw
Second motor	22kw	15kw
Feeding motor	5.5kw(hydraulic pressure motor)	5.5kw(hydraulic pressure motor)
Lifting & lowering motor	0.37kw	0.37kw
Brush motor	0.37kw	0.37kw
Working pressure	0.4~0.8Mpa	0.4~0.8Mpa
Consumption of compressed air	0.5m ³ /min	0.5m ³ /min
Overall dimensions	2212x2102x2220mm	2160x2000x2100mm
Weight	about 4000Kg	3600Kg

SPECIAL CURVE SURFACE SANDER

Compact Finishing Sander at a Compact Price
 Hexagonal shafts for direct power transfer
 Removable shafts for quicker tool change
 For finish sanding of louver-shutters- raised panel doors-frames
 For sanding finishing of Hard wood-Softwood-MDF-Veneer-Plywood
 All speeds adjustable
 Conveyor belt as wide-wide with vacuum-dual adjustable

Order No.	800-0361
Height max of workpiece	150mm
Width max of workpiece	800mm
Length	infinite
Throughfeed	2-12m/min
Rotation speed	2-12RPM
Spindle speed	350-1150RPM
Number of spindles	4
Diameter of tools max	440mm
Total motor power	13.5kw
Main motor	1.5kw(2 pieces)
Rotation motor	1.1kw
Conveyor motor	1.5kw
Lifting & lowering motor	0.37kw
Vacuum pump for RO 1 Vac	7.5kw
Dust collection duct	4xdia.150mm
Exhaust capacity	2000cubm/h
Dimensions	2050x1600x2120mm
Net weight	appr.1800kg



TRIPLE-HEAD WIDE-BELT SANDER

This machine can be used to polish various board by giving thickness and it suits to polish solid board, veneer board, shaving board, middle-density fibrous board etc. This machine index is advanced and it is in high precision, reasonable composition, modern construction and convenient operation. It has the world advance level.



Order No.	800-0353
Width of sanded panel	40~1300mm
Thickness of sanded panel	2.5~150mm
Speed of abrasive belt on 1st unit	19.5m/s
Speed of abrasive belt on 2nd unit	19.5m/s
Speed of abrasive belt on 3rd unit	14m/s
Speed of conveyor belt	7~25m/min
Size of abrasive belt	1330x2200mm
Total motor power	91.90KW
First motor	37KW
Second motor	30KW
Third motor	22KW
Feeding motor	2.2KW~6P
Lifting & lowering motor	0.37KW
Brush motor	0.37KW
Working pressure	0.4~0.8Mpa
Consumption of compressed air	0.5m ³ /min
Average speed of sucked air	25~30m/s
Overall dimensions	2600x26000x2200mm
N.W.	4800kg

WIDE DOUBLE-BELT SANDER

This machine can be used to polish various board by giving thickness and it suits to polish solid board, veneer board, shaving board, middle-density fibrous board etc. This machine index is advanced and it is in high precision, reasonable composition, modern construction and convenient operation. It has the world advance level.



Order NO.	800-0354
Width of sanded panel	40~1300mm
Thickness of sanded panel	2.5-150mm
Speed of abrasive belt on 1st unit	19.5m/s
Speed of abrasive belt on 2nd unit	15m/s
Speed of conveyor belt	7~38m/min
Size of abrasive belt	1330x2200mm
Total motor power	56.74KW
First motor	30KW-2p
Second motor	22KW-4p
Feeding motor	4KW~4P
Lifting & lowering motor	0.37KW
Brush motor	0.37KW
Working pressure	0.4~0.8Mpa
Consumption of compressed air	0.5m ³ /min
Average speed of sucked air	25~30m/s
Overall dimensions	2170x2600x2200mm
N.W.	4000kg

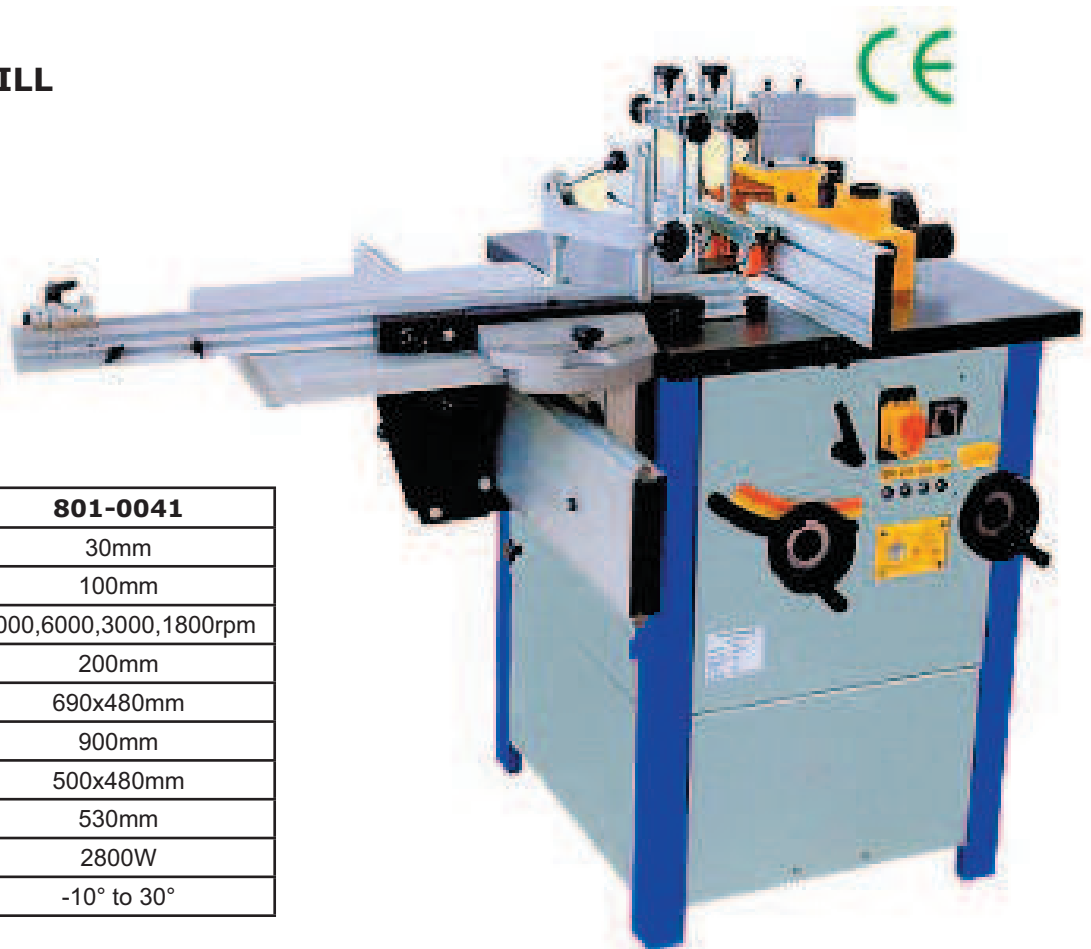
SPECIAL CURVE SURFACE SANDER

Compact Finishing Sander at a Compact Price
 Removable shafts for quicker tool change
 For finish sanding of louver-shutters- raised panel doors-frames
 For sanding finishing of Hard wood-Softwood-MDF-Veneer-Plywood
 All speeds adjustable
 Conveyor belt as wide-wide with vacuum-dual adjustable



Order No.	800-0362
Height max of workpiece	150mm
Width max of workpiece	1100mm
Length	infinite
Throughfeed	2-12m/min
Rotation speed	2-12RPM
Spindle speed	Max 750RPM
Number of spindles	8
Diameter of tools max	370mm
Total motor power	25.07kw
Main motor	1.5kw(4 pieces)
Rotation motor	1.5kw
Conveyor motor	1.5kw
Lifting & lowering motor	0.37kw
Feeding motor	2.2kw
Vacuum pump for RO 1 Vac	7.5kw
Dust collection duct	4xdia.150mm
Exhaust capacity	4000cubm/h
Dimensions	2850x2200x2200mm
Net weight	appr.3500kg

WOOD MILL



Order No.	801-0041
Spindle Diameter	30mm
Spindle Travel	100mm
Spindle Speed	9000,6000,3000,1800rpm
Blade Diameter	200mm
Main Table Size	690x480mm
Table Height	900mm
Sliding Table Size	500x480mm
Sliding Table Travel	530mm
Motor Power	2800W
Spindle Tilting Angle	-10° to 30°

WOOD MILL

Order No.	801-0040
Spindle Diameter	30mm
Spindle Travel	100mm
Spindle Speed	9000,6000,3000,1800rpm
Blade Diameter	200mm
Main Table Size	690x480mm
Table Height	900mm
Sliding Table Size	500x480mm
Sliding Table Travel	530mm
Motor Power	2800W
Spindle Tilting Angle	



800-0040

MULTI-PURPOSE WOODWORKING MACHINE



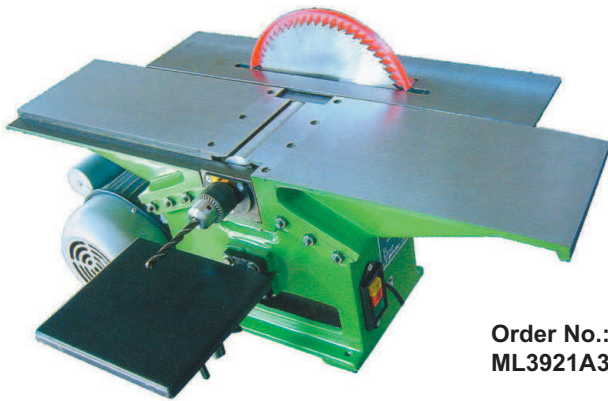
Order No.:
ML392F

Order No.	ML392C	ML392F
Max. planing width	200mm	250mm
Max. planing capacity	3mm	3mm
Max. rabbet cutting depth	10mm	
Max. sawing thickness	70mm	70mm
Press planing thickness	6-90mm	6-120mm
Min. press planing length	150mm	150mm
Max. tenon & drilling dia.	12mm	12mm
Cutter spindle speed	3500r/min	4000r/min
Press planing feeding speed	6.5m/min	6.5m/min
Milling cutting dia.	20mm	20mm
Max. milling width	40mm	40mm
Sawing arbor speed	3500r/min	3500r/min
Max. cross-cutting width	270mm	300mm
Index ruler adjustment	±45°	±45°
Motor power	1.5kw	1.5 or 2.2kw



Order No.: ML392C

MULTI-PURPOSE WOODWORKING MACHINE



Order No.:
ML3921A3



Order No.:
ML292F5

Order No.	ML291A3	ML292A3	MQ432W/III	ML292w9	ML292F5	MQ432U/II
Max. planing width	150mm	200mm	200mm	200mm	200mm	200mm
Max. planing depth	3mm	3mm	3mm	3mm	3mm	3mm
Max. sawing thickness	50mm	50mm	50mm	50mm	50mm	50mm
Tenoning technical			10;13;16	10;13;16	10;13;16	10;13;16
Max. drilling dia.	13mm	13mm	13mm	13mm	13mm	13mm
Max. rabbeting depth	15×10mm	15×10mm	15×10mm	15×10mm	15×10mm	15×10mm
Max. milling width	50mm	50mm	45mm	50mm	50mm	50mm
Max. milling depth			10mm	10mm	10mm	10mm
Moter power	1.1kw	1.1kw	1.1kw	1.1kw	1.1kw	1.1kw
Weight	68kg	76kg	100kg	100kg	125kg	130kg



Order No.:
MQ432U/II



Order No.: ML392A-1



Order No.: MQ443A

Order No.	ML392A-1	MQ443A
Max. planing width	200mm	300mm
Max. planing depth	3mm	3mm
Planing thickness	6-120mm	6-125mm
Min. planing length	150mm	130mm
Max. sawing thickness	85mm	95mm
Max. drilling dia.	13mm	13mm
Max. tenoning length	100mm	100mm
Max. mortising depth	90mm	100mm
Moter power	1.5kw	1.5kw
Weight	160kg	210kg

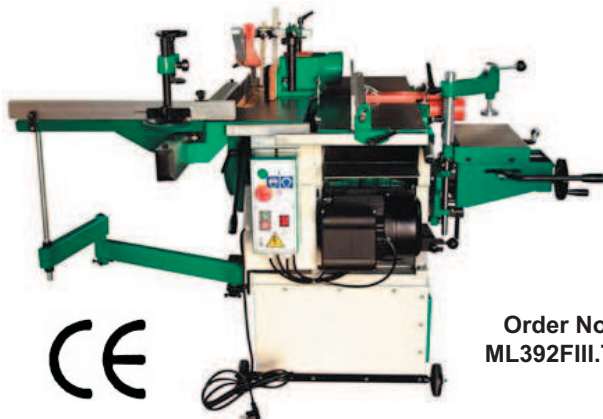
COMBINED UNIVERSAL MACHINE



Order No.: ML393E



Order No.: ML392FI



Order No.: ML392FIII.TGI



Order No.: ML392CI



Order No.: ML392E



Order No.: ML393C



Order No.	ML392CI	ML392FI	ML392FIII.TGI	ML392E	ML393C	ML393E
Surface unit						
Working width of surface tables	200mm	250mm	250mm	250mm	300mm	350mm
Length of surface tables	850mm	960mm	960mm	1120mm	1300mm	1700mm
Thickening unit						
Range of thickness	6-90mm	6-120mm	6-120mm	6-140mm	6-240mm	6-240mm
Circular saw						
Max. blade dia.	250mm	250mm	250mm	250mm	305mm	305mm
Max. sawing thickness	70mm	70mm	70mm	70mm	90mm	90mm
Max. crosscutting width	270mm	300mm	300mm	500mm	1250mm	1250mm
Arbor speed	3500r/min	3500r/min	8100r/min	4500r/min	1750/3500/6700r/min	
Max. spindle working height			40mm	65mm	85mm	85mm